



Fly Fishing the Gunpowder River

Presented by Bryan Donoway of
Flys In Disguise
April 2024

(All Aerial images from Google Maps)







Gunpowder River Regulations

Catch-and-Return Trout Fishing Areas—Limited to the Use of Artificial Lures

Areas:

- Patuxent River, Howard and Montgomery counties—the mainstem of the Patuxent River from the crossing of MD Route 97 upstream to the crossing of MD Route 27 and Cabin Branch from its confluence with the Patuxent River upstream to Hipsley Mill Road.
- Morgan Run, Carroll County—from bridge on London Bridges Road upstream to bridge on MD Route 97.
- Paint Branch and tributaries, Montgomery County—upstream of Fairland Road.
- **Gunpowder Falls, Baltimore County—mainstem from Prettyboy Reservoir Dam downstream to Bluemount Road.**
- North Branch Potomac River—from an overhead cable and red bank post located approximately 345 yards below the Jennings Randolph Reservoir spillway downstream approximately one mile to a red post, located approximately 100 yards above the upstream concrete abutments at Barnum, West Virginia, and from a red post located below a pool known as Blue Hole, approximately 1/3 mile upstream of Bench Mark 1110 on the Westernport United States Geological Survey Quadrangle, downstream approximately 4 miles to the confluence of Piney Swamp Run.
- Youghiogheny River, Garrett County—mainstem beginning at the red post approximately 100 yards upstream of the Deep Creek Lake tailrace and extending downstream 4 miles to the Sang Run Bridge.
- Little Hunting Creek, Frederick County—mainstem from the red post located approximately 0.25 mile downstream of Route 806, upstream to include all waters of Little Hunting Creek within the boundaries of Cunningham Falls State Park.

Put-and-Take Trout Fishing Areas

County and Baltimore City

Avalon Pond (Lost Lake)... - 0

Gunpowder Falls—mainstem from the red post located 1.6 miles downstream of Corbett Road downstream to the hiker/biker bridge located approximately one mile downstream of Phoenix Road; and from Cromwell Bridge downstream to the Interstate Rt. 95 bridge - 1

Gwynn Oak Park Pond - 0

Gwynns Falls—mainstem below MD Route 140 - 0

Jones Falls—mainstem below Lake Roland - 0

Little Falls—mainstem from Wiseburg Road upstream to Valley Mill Road - 1

Little Gunpowder Falls—mainstem from Jericho Road upstream to Route 165 - 1

Patapsco River—mainstem from the B&O Viaduct upstream to Bloede Dam - 1

Stansbury Park Pond - 0



Gunpowder River Fishing Access





GUNPOWDER FALLS TROUT MANAGEMENT AREA

PARK WATCH 1-800-825-7275 GUNPOWDER FALLS STATE PARK HEADQUARTERS 1-410-592-2097

RIVER FACTS

- MORE THAN 1.5 MILLION PEOPLE USE THE GUNPOWDER RIVER AS A SOURCE OF DRINKING WATER.
- CONNECTS PRETTY BOY RESERVOIR AND LOCH RAVEN RESERVOIR.
- DURING THE SUMMER THE RIVER IS USED FOR FISHING, TUBING AND CANOEING.

GUNPOWDER TROUT SPECIES

BROOK TROUT

- NATIVE TO THE GUNPOWDER RIVER.
- GROW TO AN AVERAGE SIZE OF 4 INCHES.
- DIET CONSISTS OF JUVENILE ANTS, PLYING ANTS, BEETLES, CADDISFLIES AND WORMS.

BROWN TROUT

- NATURALLY REPRODUCE IN THE GUNPOWDER RIVER.
- GROW TO AN AVERAGE SIZE OF 3 INCHES.
- DIET CONSISTS OF PLYING ANTS, PLYING ANTS, BEETLES, CADDISFLIES AND WORMS.

RAINBOW TROUT

- INTRODUCED IN THE GUNPOWDER RIVER.
- GROW TO AN AVERAGE SIZE OF 9-10 INCHES.
- DIET CONSISTS OF JUVENILE ANTS, PLYING ANTS, BEETLES, CADDISFLIES AND WORMS.

INFORMATIVE LINKS

MARYLAND DNR TROUT FISHERIES HOME PAGE
DNR.MARYLAND.GOV/SERVERS/DNR/TRAUT/FISH/INDEX.ASPX

DIYING INFORMATION
 DIYING IS AN OFFENSE ALONG THAT CAN RESULT IN FINES, IMPROVED AND CLOSURE OF THE RIVER. PLEASE REPORT AND REPORTING TO THE DNR AT THE POINTS OF THE WASTEWATER STATION IS TO PREVENT THE SPREAD OF DYEING.
WWW.CHEMSEWERAGE.NET/FILES/DIYING/TRAUTDIYING.WORD

USGS STREAM GAUGE
 THIS IS AN OFFICIAL RESOURCE TO MEASURE THE FLOW OF THE GUNPOWDER RIVER.
WWW.WATERGAUGES.USGS.GOV

Leave No Trace

PROGRAM SPONSORS

MARYLAND DEPARTMENT OF NATURAL RESOURCES

TROUT UNLIMITED MARYLAND CHAPTER

BOY SCOUTS OF AMERICA
 Prepared. For Life.

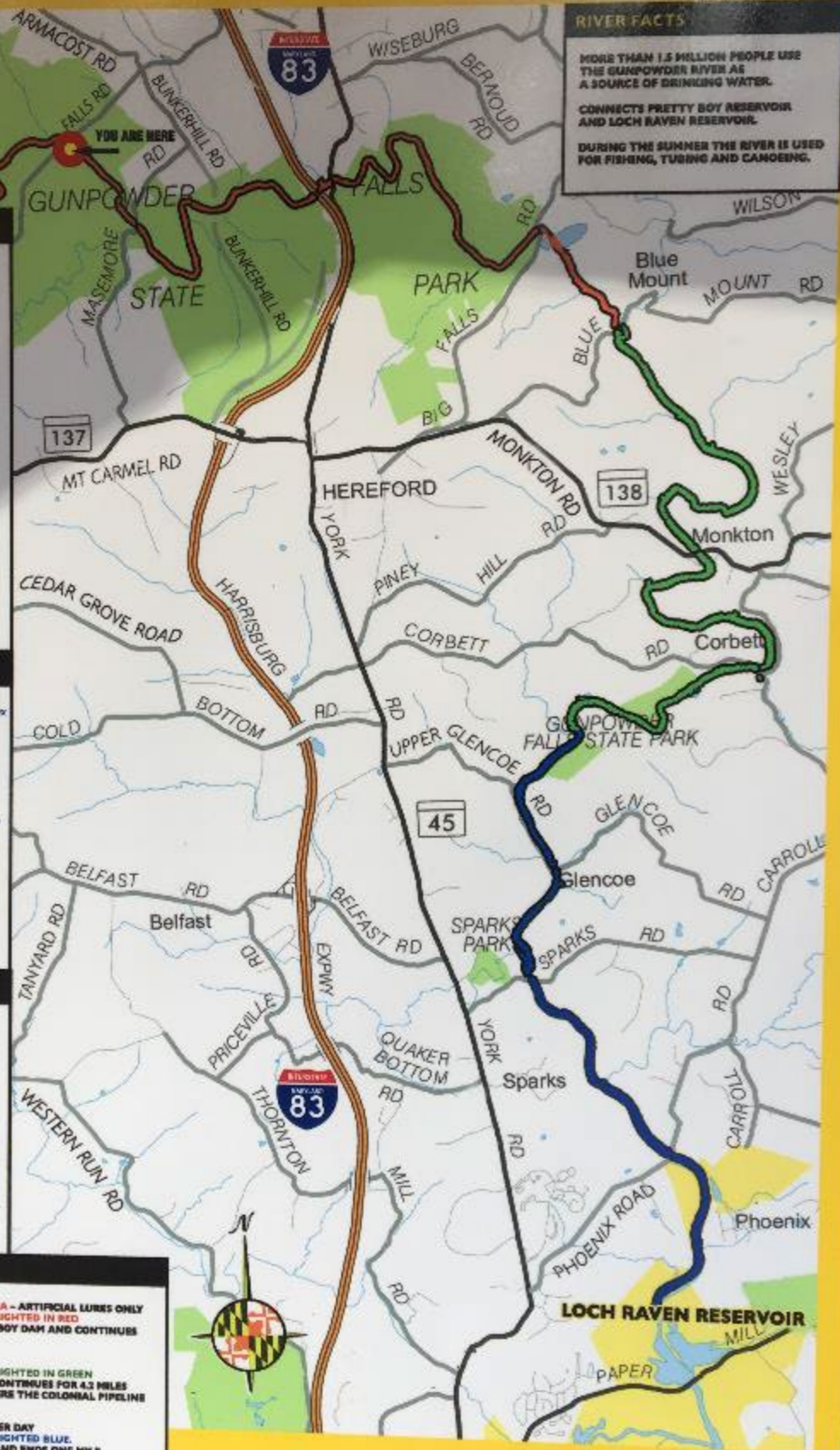
EAGLE SCOUT PROJECT LEADER JACOB DAMKO
 TROOP 389 HANSPHEAD MARYLAND

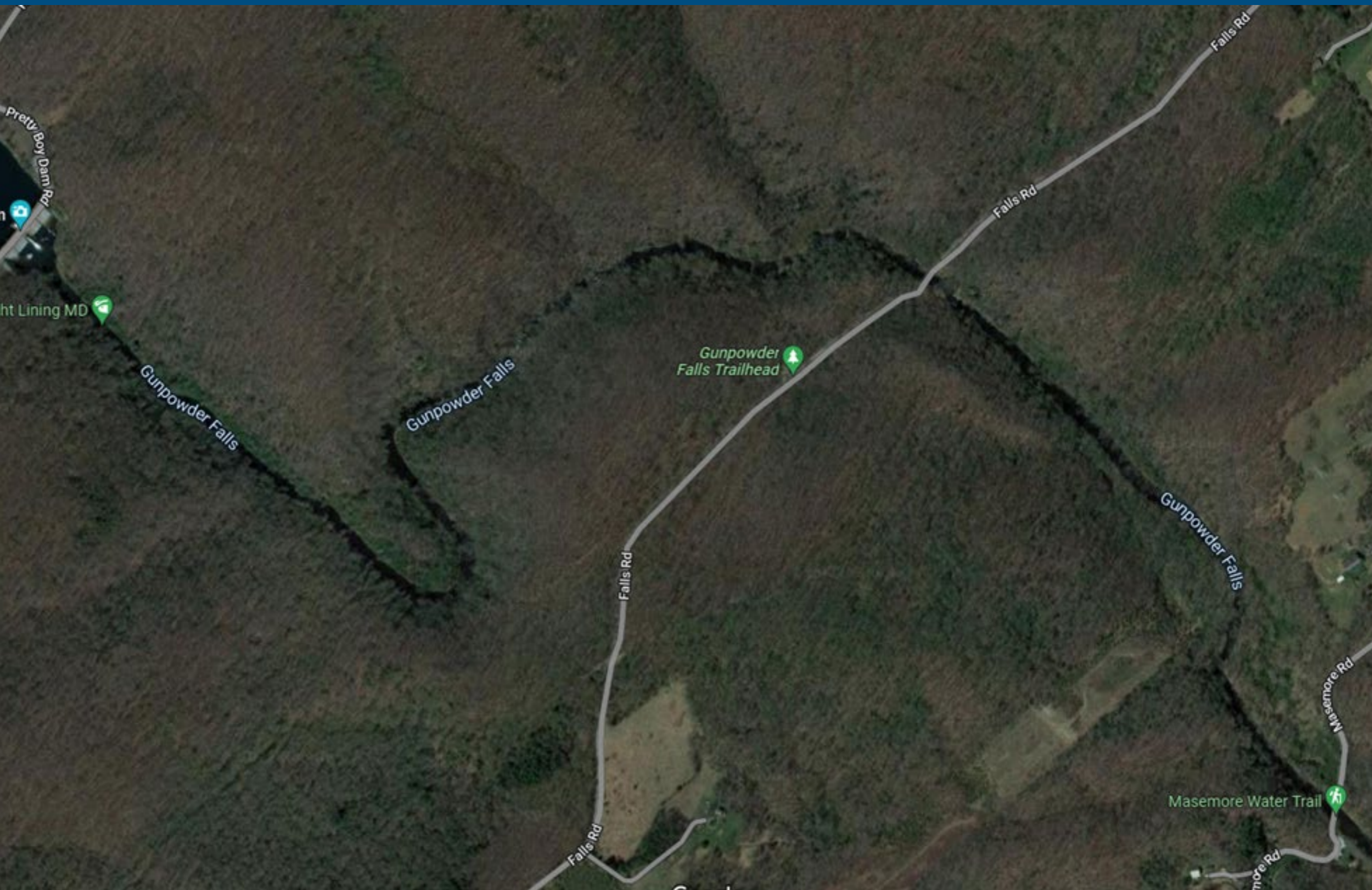
TROUT MANAGEMENT AREAS

CATCH AND RETURN TROUT FISHING AREA - ARTIFICIAL LURES ONLY
 NOTE: THIS SECTION OF THE RIVER HIGHLIGHTED IN RED BEGINS AT THE TAIL WATERS OF PRETTY BOY DAM AND CONTINUES 7.3 MILES TO BLUE MOUNT ROAD.

WILD TROUT - 2 FISH PER DAY
 NOTE: THIS SECTION OF THE RIVER HIGHLIGHTED IN GREEN BEGINS AFTER BLUE MOUNT ROAD AND CONTINUES FOR 4.3 MILES TO 1.5 MILES BELOW CORBETT ROAD, WHERE THE COLONIAL PIPELINE CROSSES THE GUNPOWDER.

PUT AND TAKE TROUT FISHING - 5 FISH PER DAY
 NOTE: THIS SECTION OF THE RIVER HIGHLIGHTED IN BLUE BEGINS 1.5 MILES AFTER CORBETT ROAD AND ENDS ONE MILE DOWNSTREAM OF PHOENIX ROAD.





Pretty Boy Dam Rd

ht Lining MD

Gunpowder Falls

Gunpowder Falls

Gunpowder Falls Trailhead

Falls Rd

Falls Rd

Falls Rd

Gunpowder Falls

Falls Rd

Masemore Rd

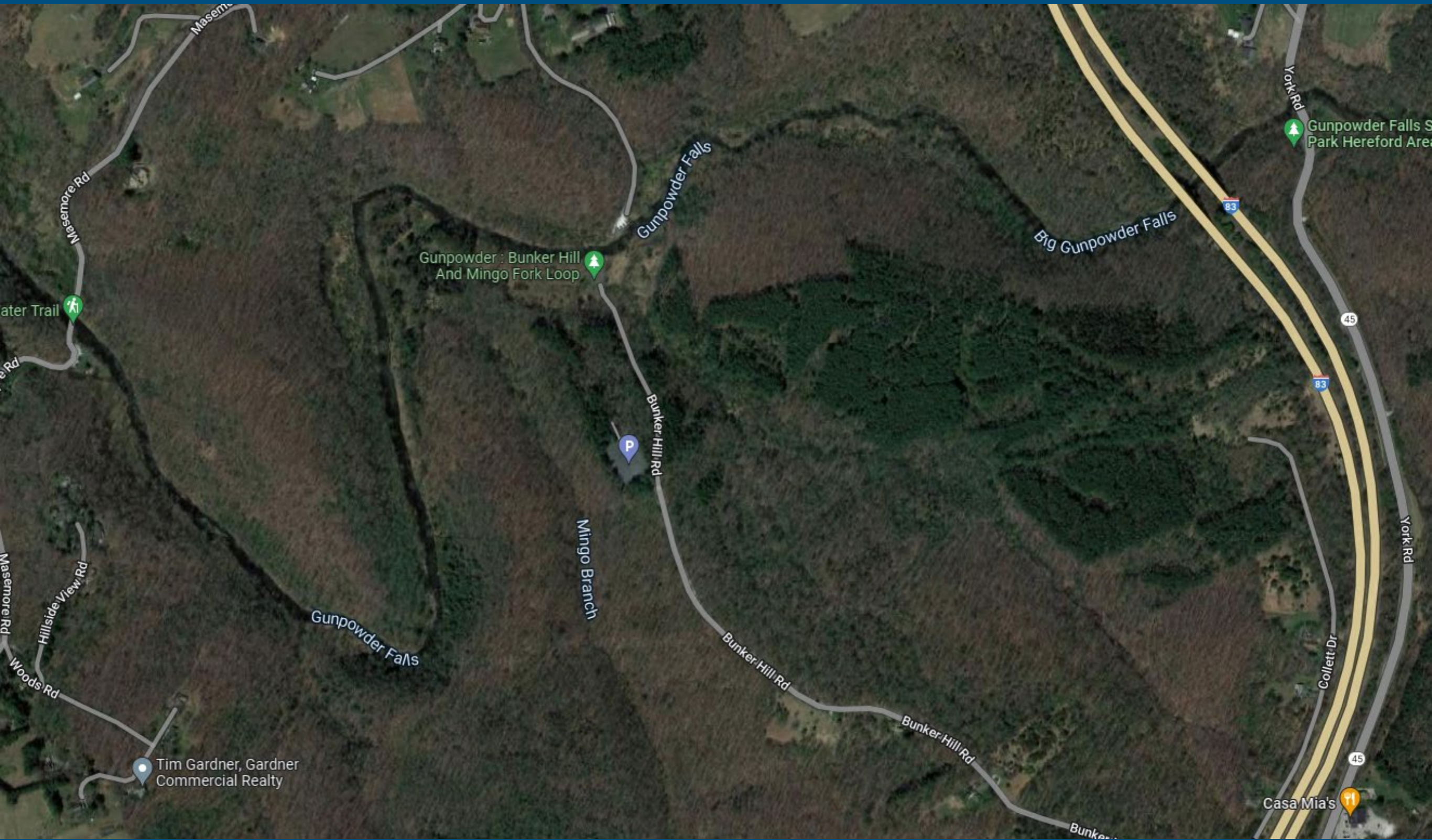
Masemore Water Trail

more Rd









Tim Gardner, Gardner
Commercial Realty

Casa Mia's

Gunpowder : Bunker Hill
And Mingo Fork Loop

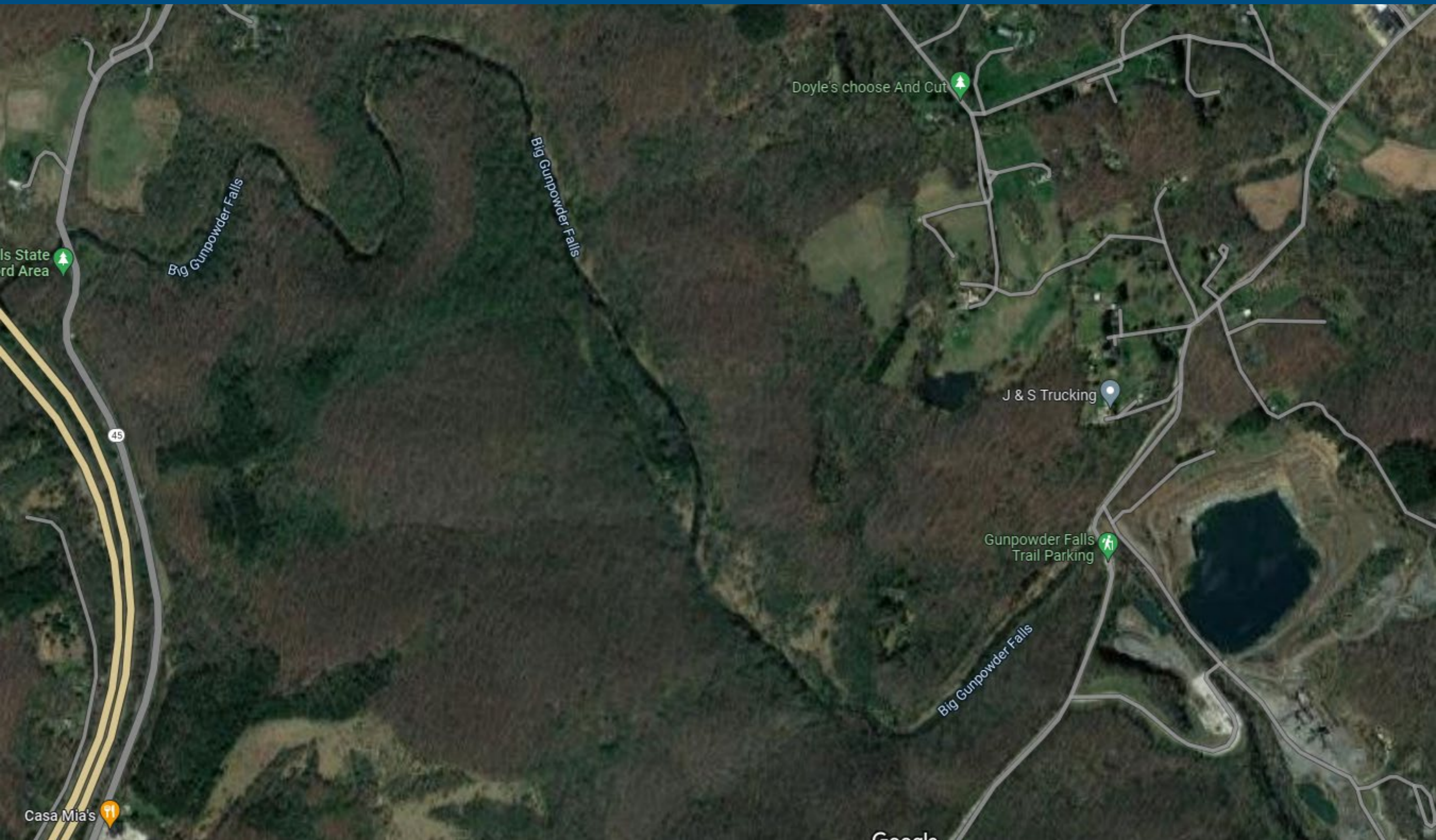
Gunpowder Falls S
Park Hereford Area











Google









Gunpowder Falls
Trail Parking



Puh'tok in the Pines



138

138

Monkton Rd

Monkton Station

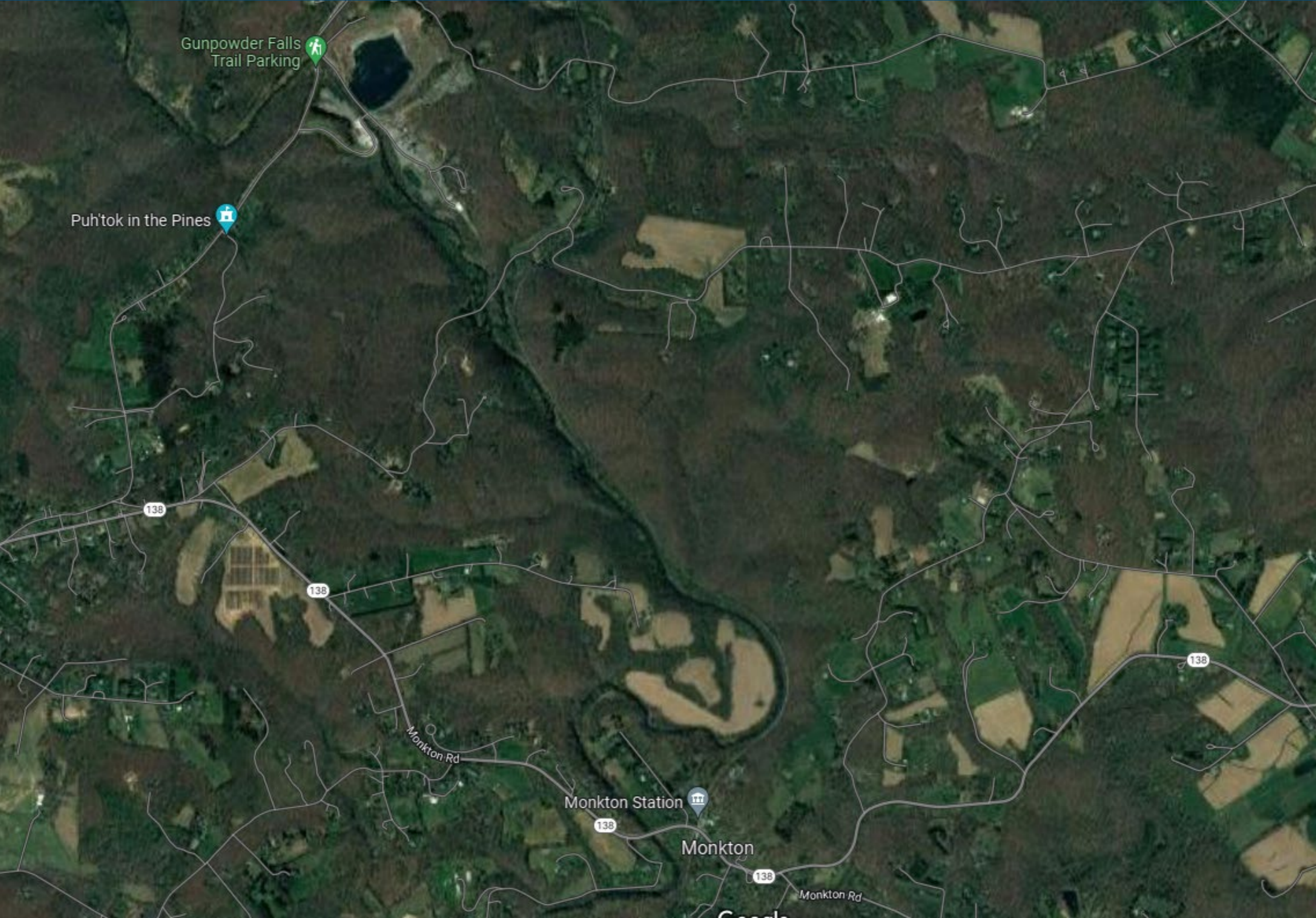
Monkton

138

138

Monkton Rd

138













Recommended gear for Gunpowder River

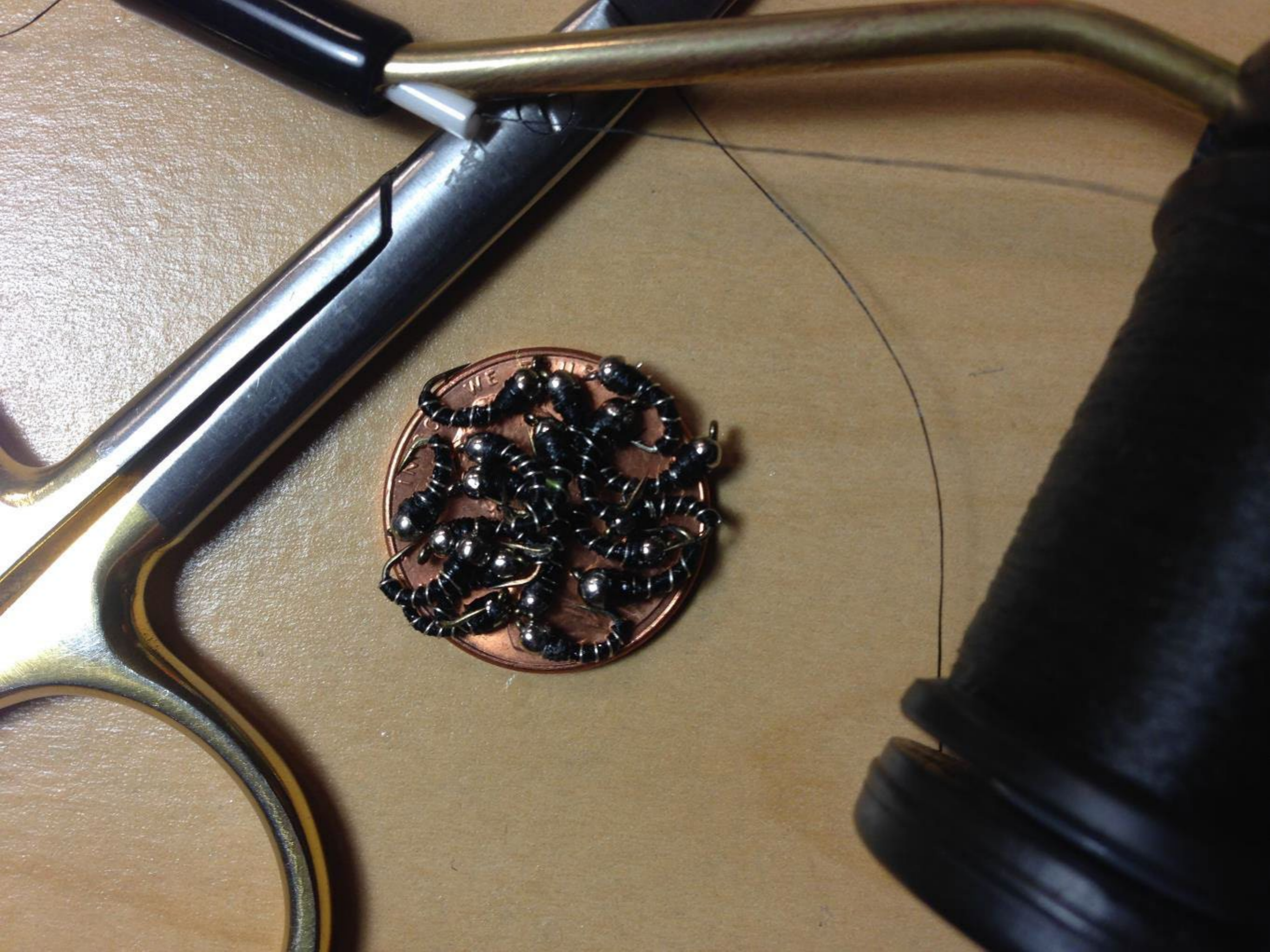
- 4-5 weight rods 8.5 - 9 ft
- 2-3 weight euro rods - to 11 ft
- Chest or Hip waders
- Wading staff - optional
- Floating fly line
- 5X - 3X leaders 9 ft length (min.)
- 7.5 ft length for streamers
with a sink tip (graduated sink
is best)
- Euro leaders to 25 ft.

Seasons, Hatches, Effective Flies, and Tactics

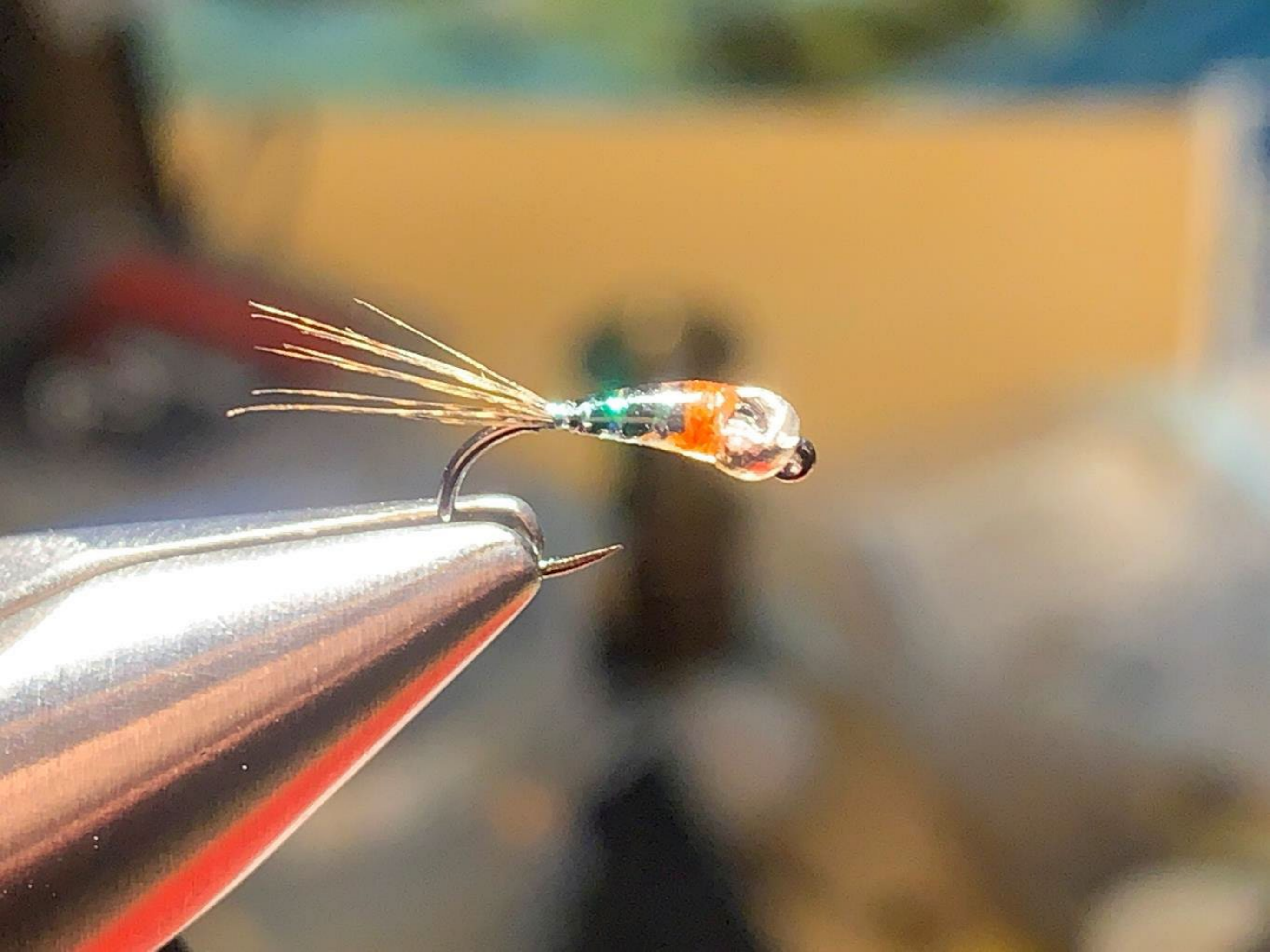
Winter Season

Late December thru Early March

- Look for midges throughout winter
- Black Stonefly and Little Brown Stones

























Spring Season

Late March thru Late June

- Things really start to heat up
- Mayflies show up in good numbers
 - Hendricksons and March Browns
- Caddis round out the dry fly action



































Summer Season

July thru Mid-September

- Caddis dry action thru summer
- Terrestrials (beetles, ants,)
- Don't rule out midges through summer
- Tricos end out the summer season



























Fall Season

September thru Mid December

- Caddis are still a productive Dry
- Crickets/Hoppers
- Streamers, streamers, streamers...



















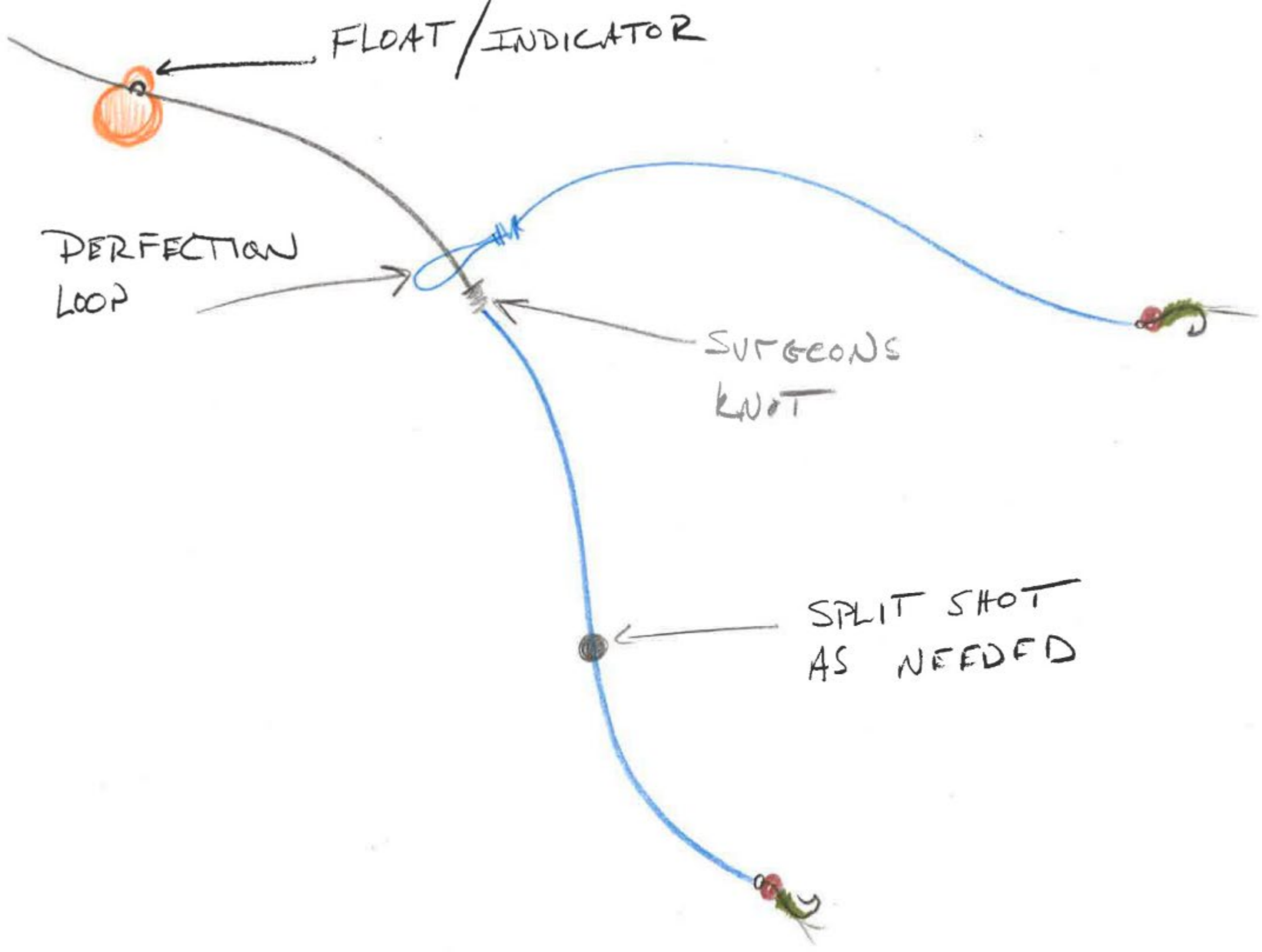
Rigging

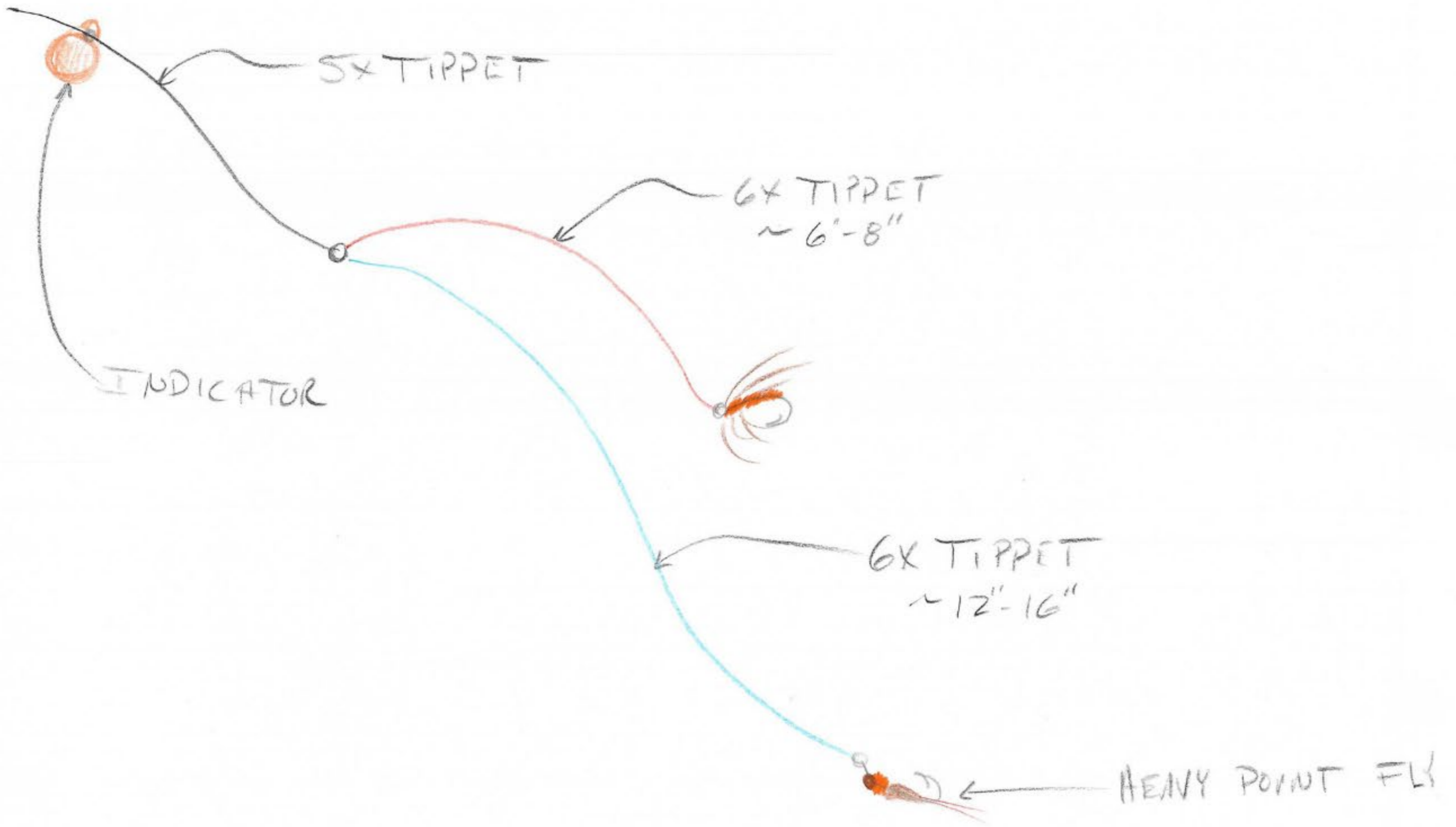
FLOAT / INDICATOR

PERFECTION LOOP

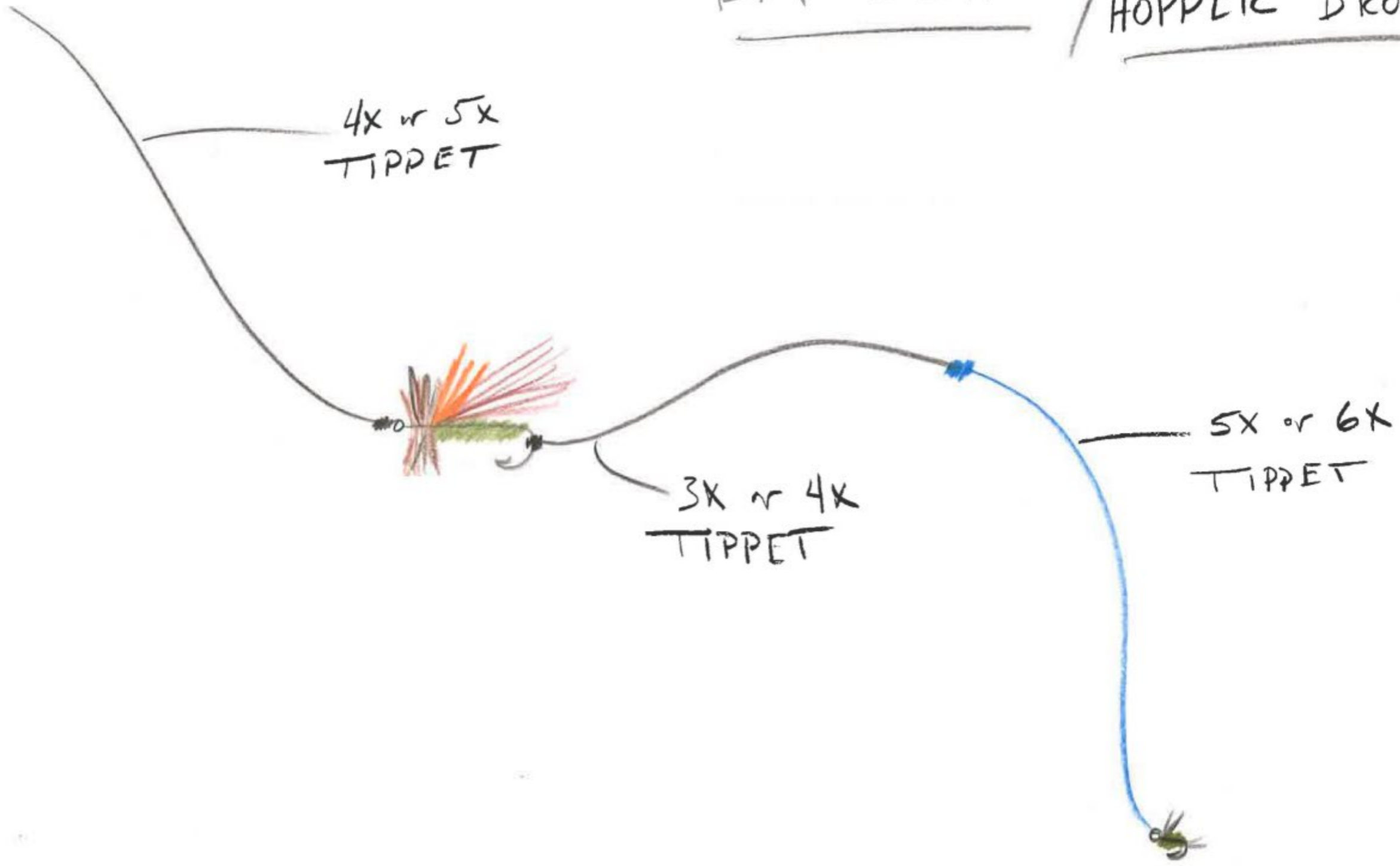
SURGEONS KNOT

SPLIT SHOT AS NEEDED





DRY DROPPER / HOPPER DROPPER



4X or 5X
TIPPET

3X or 4X
TIPPET

5X or 6X
TIPPET

MADE BY MAXIMA FISHING LINES • 82532 GERETSRIED • GERMANY

MAXIMA

Chameleon

BA

LEADER

15 lb

MATERIAL

.015 inch
27 yd

MAXIMA USA, OREGON

spool equipped with innovative line clip





328 FT
8 LB



SS07408
AMNESIA

MEMORY FREE MONOFILAMENT
Ideal for LEADERS and TRACES
SHOOTING and RUNNING LINES
for SEA, COARSE and GAME FISHING

100M
3.6KG



MADE IN USA



MEMORY FREE MONOFILAMENT
Ideal for LEADERS and TRACES
SHOOTING and RUNNING LINES
for SEA, COARSE and GAME FISHING

16 127 06308 7

MADE IN USA

ORVIS®

ROD AND TACKLE

Tippet Rings, (S)



**5/64"
(2.0mm)**

Qty 10



ORVIS®

TACTICAL NYMPH LEADER

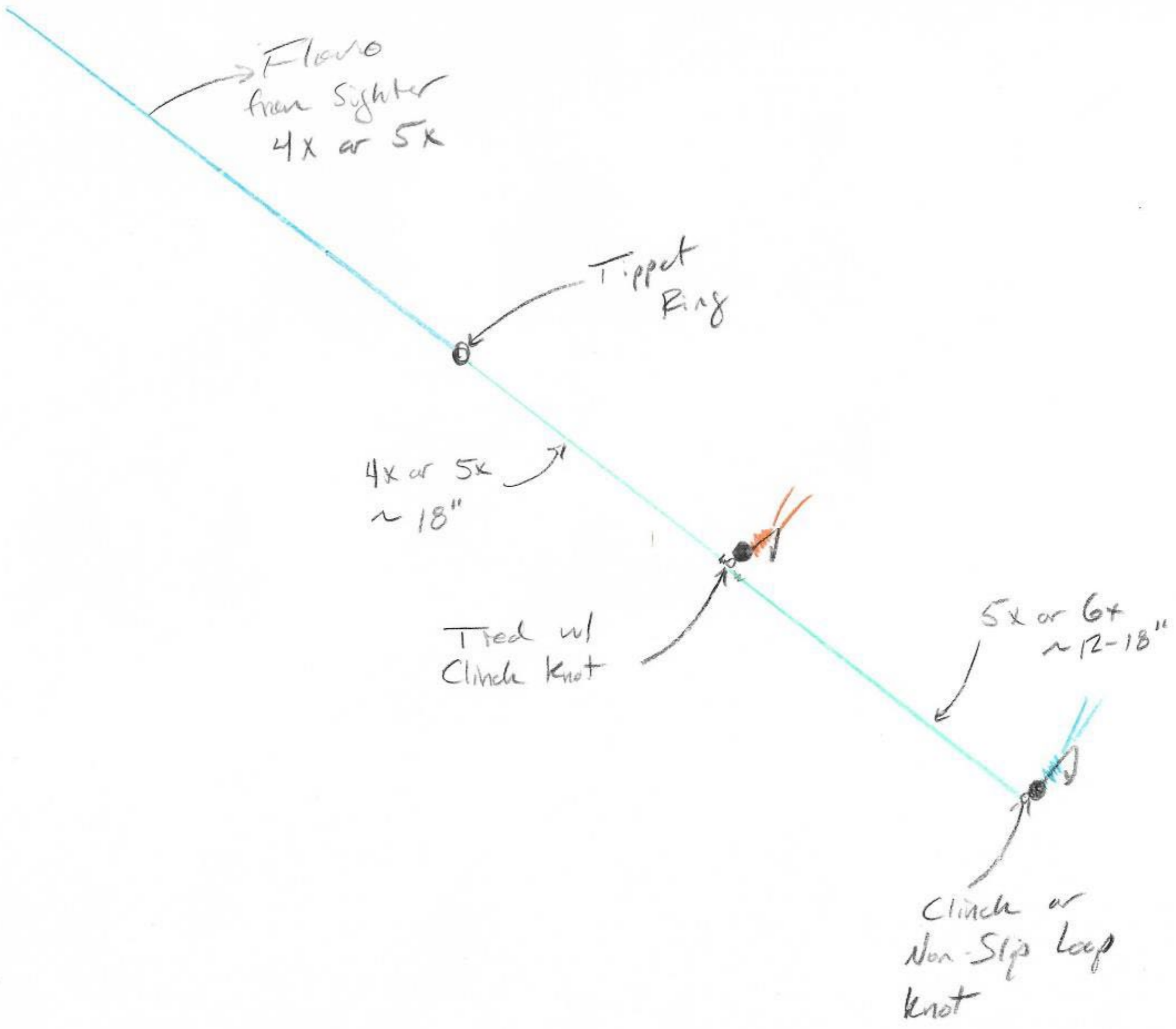
2x
SIZE

13ft
3.96M
LENGTH

8.75lbs
3.96kgs
BREAK STRENGTH



Inline Rigging



Leader Formula

15'-20'
Maxima 8 or 10 lb.



Blood knot
T/P.



Sighter

~ 24"-36"

(Should be the
Same or lighter
than Maxima)



4x or 5x Flows
~ 24"



Tippet
Ring



5x or 6x
Flows



5x or 6x
Flows



Dry Fly Rigging

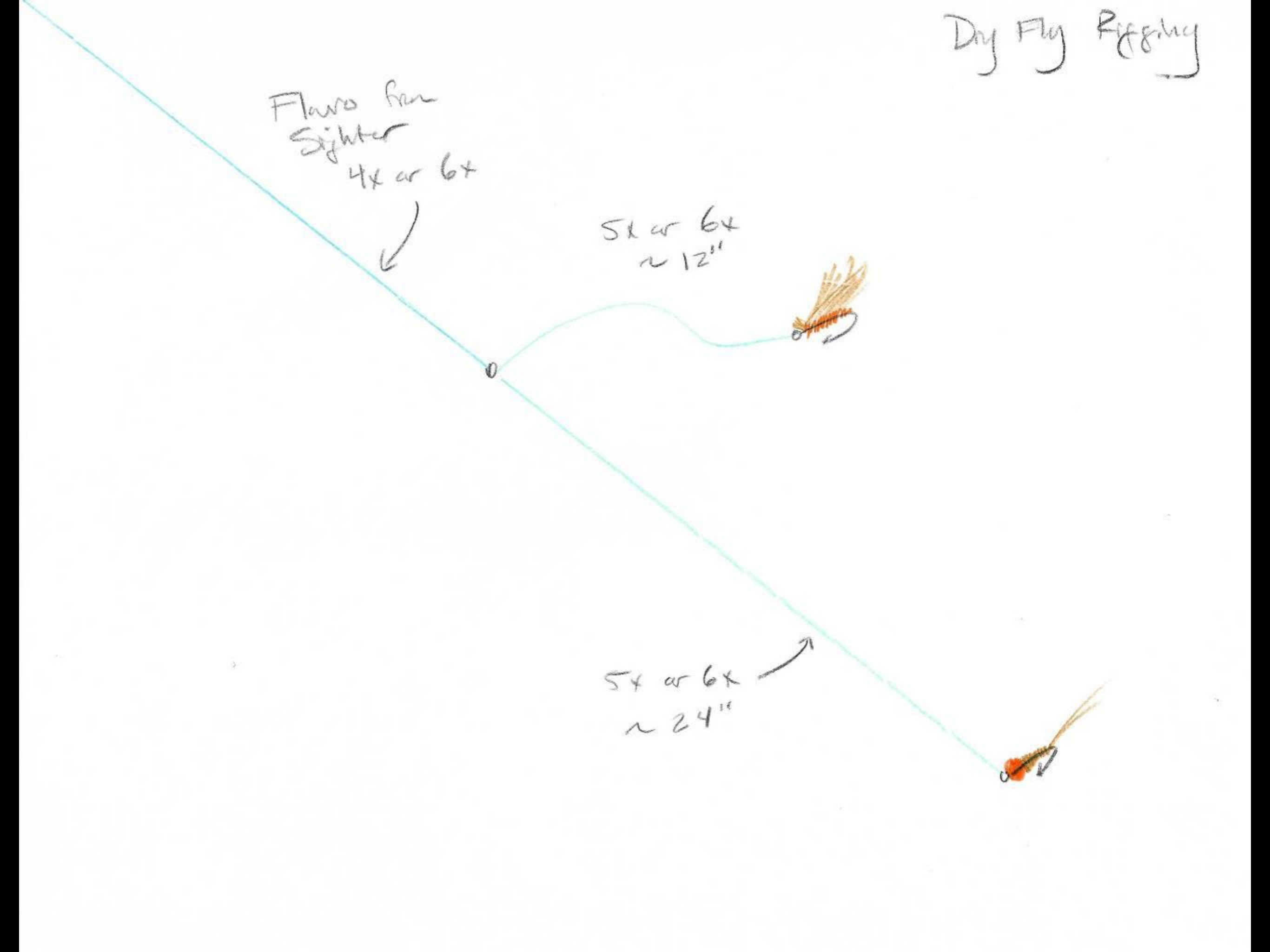
Flavo Fan
Sighter
4x or 6x



5x or 6x
~ 12"



5x or 6x
~ 24"



Nymphing Tactics





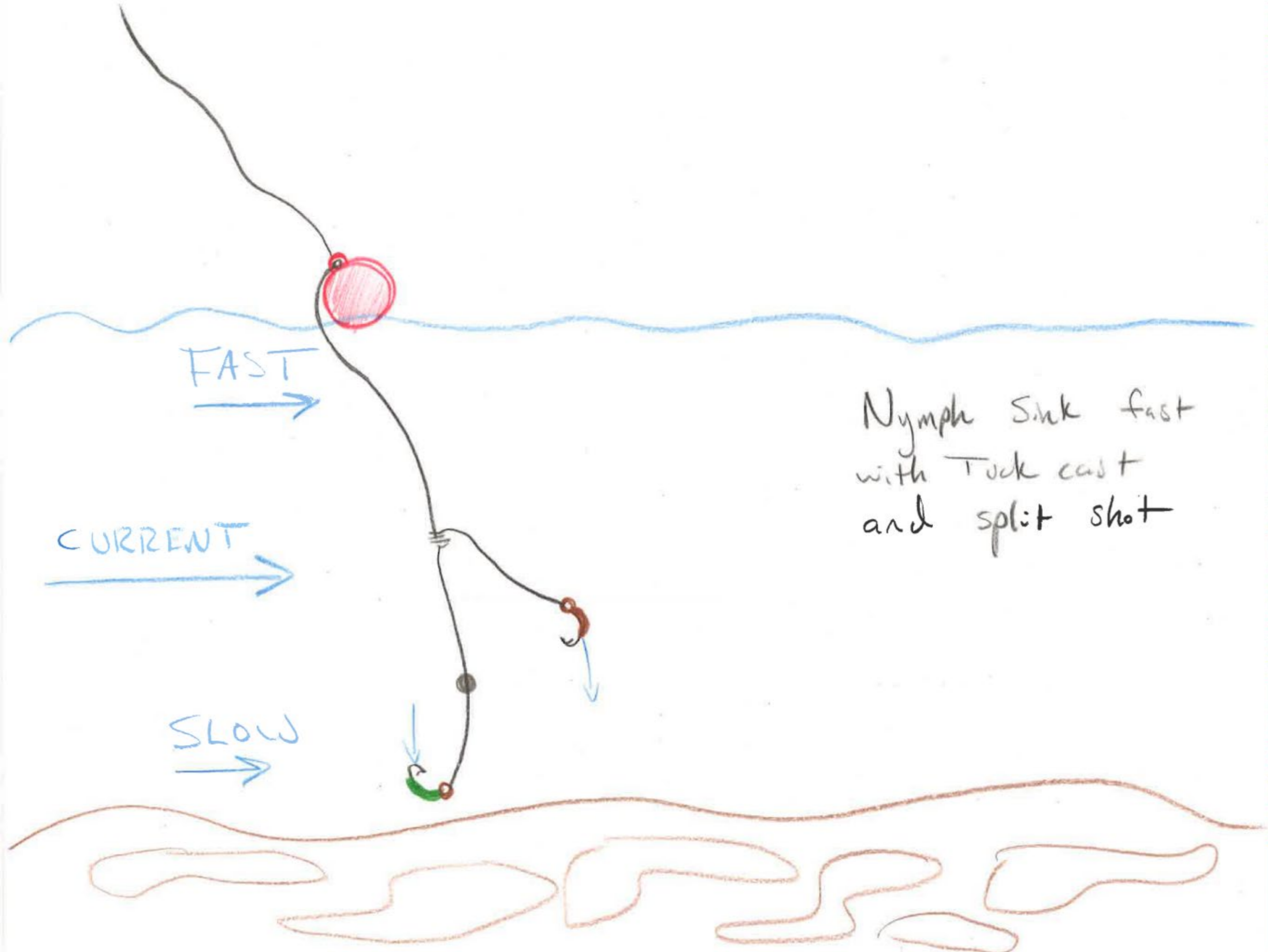






Fishing with an Indicator
vs.
Tight-lining (Euro) Nymphing

Fishing with an Indicator

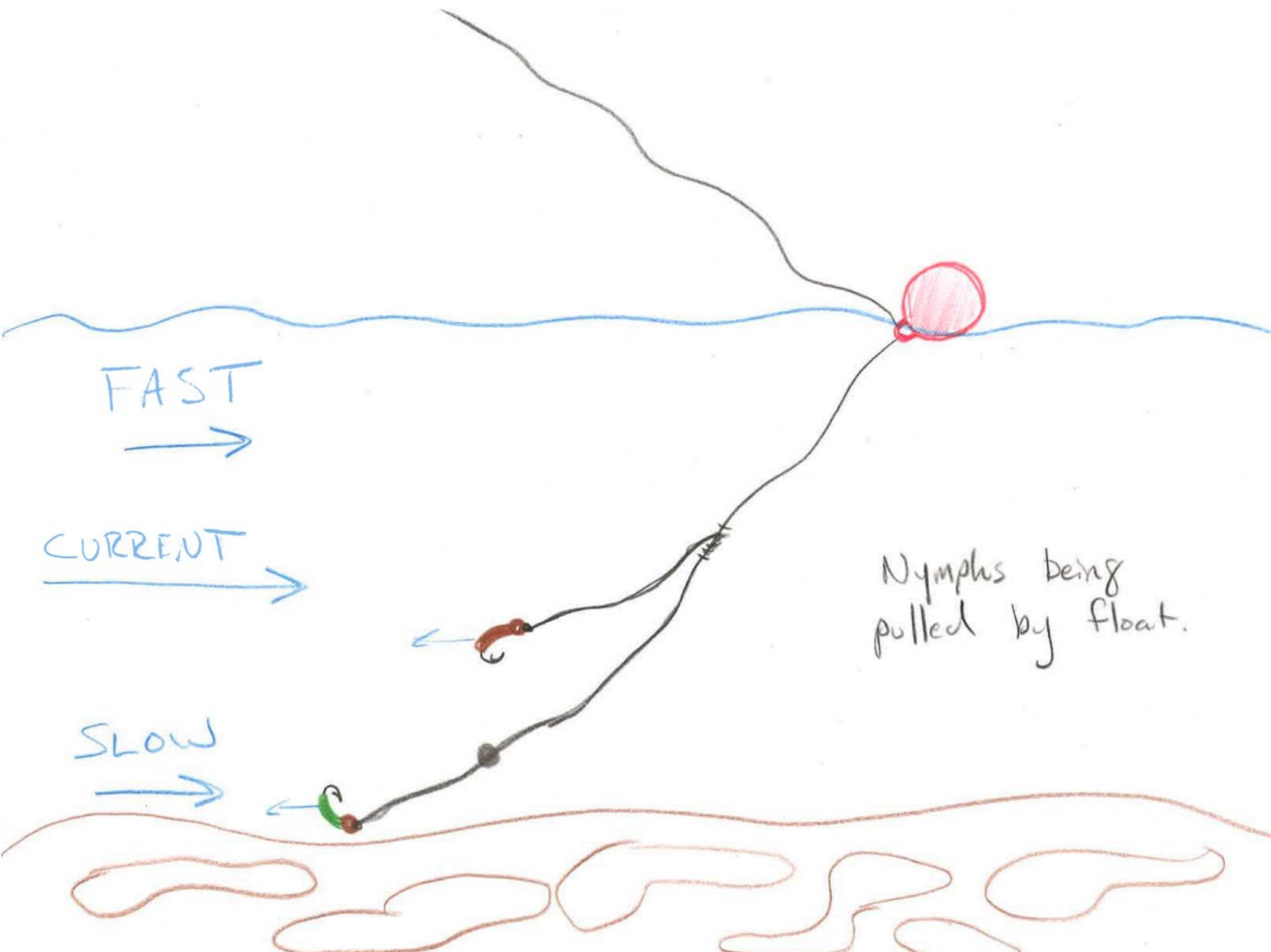


FAST
→

CURRENT
→

SLOW
→

Nymph Sink fast
with Tuck cast
and split shot



FAST
→

CURRENT
→

SLOW
→

Nymphs being pulled by float.



FAST



CURRENT

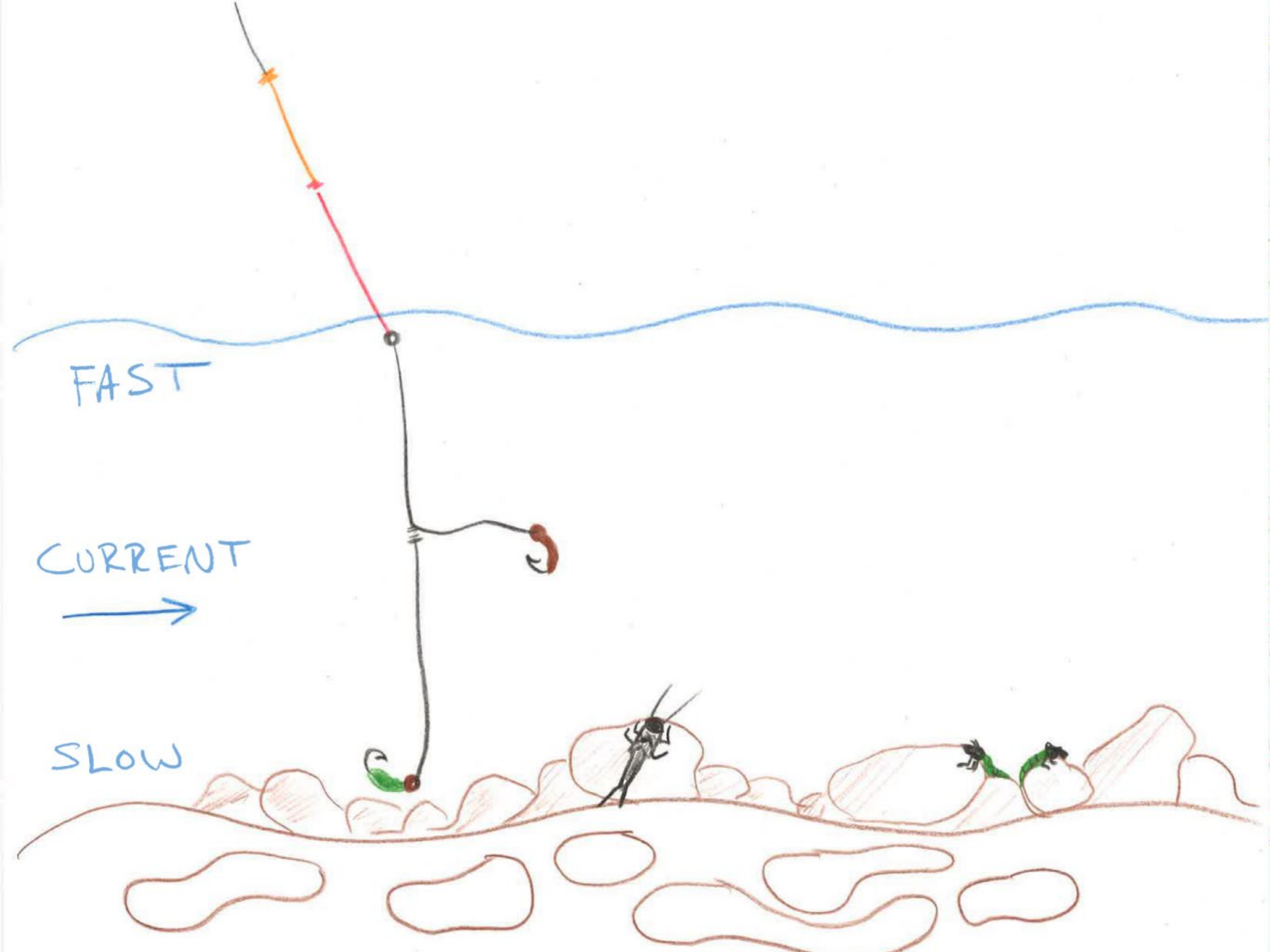


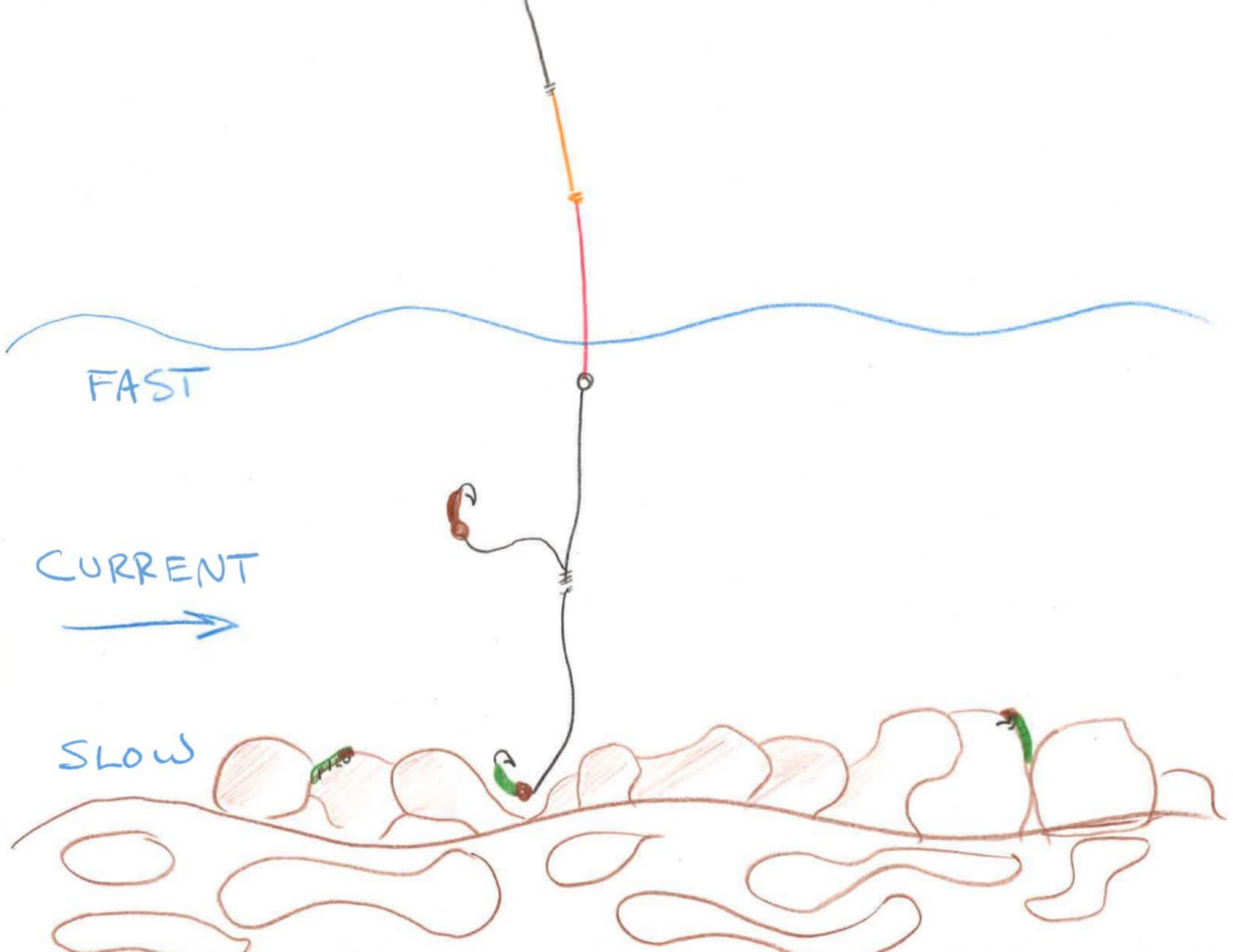
SLOW

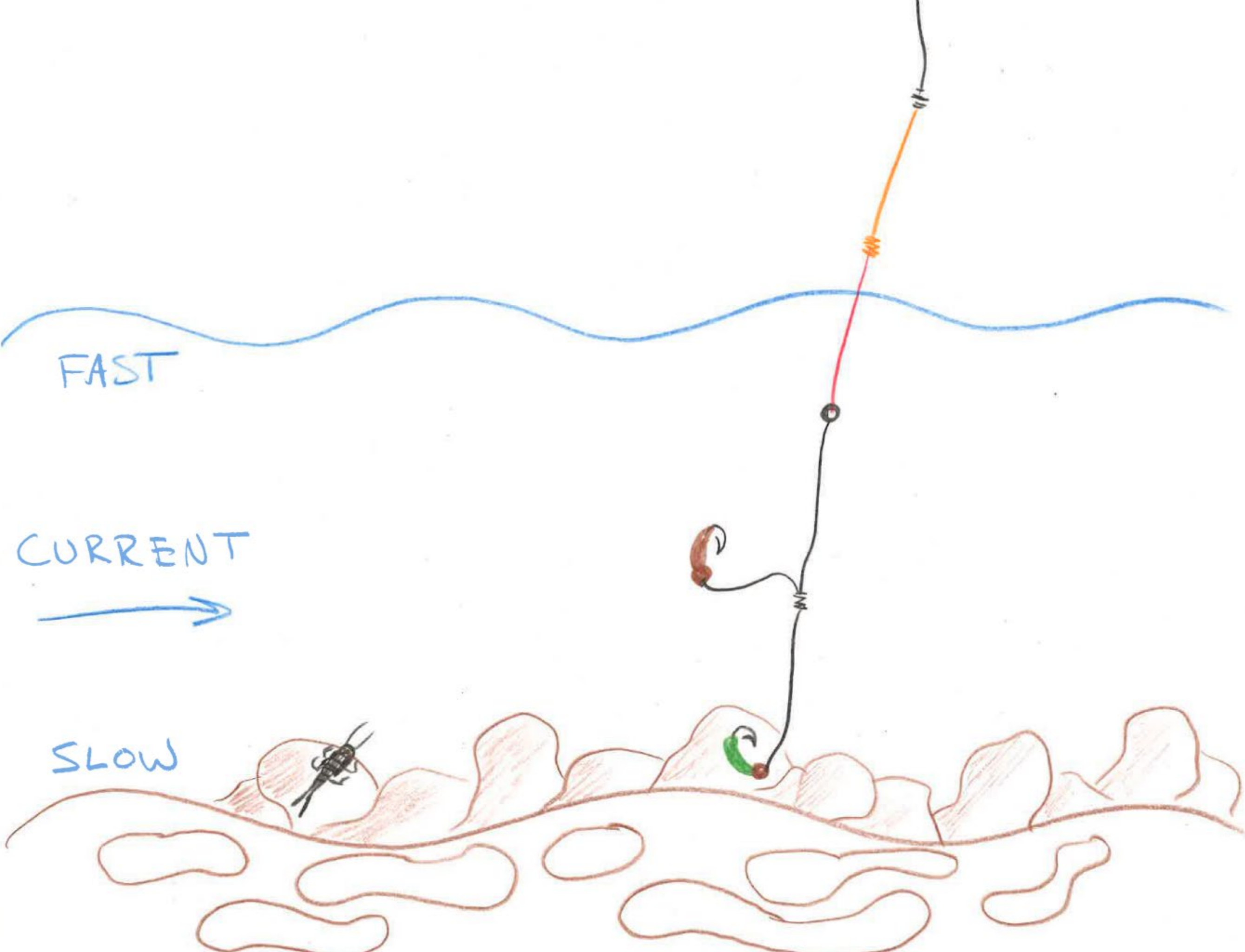


Nymphs lift off of bottom when floats speed up

Fishing without indicator and using sighter







FAST

CURRENT

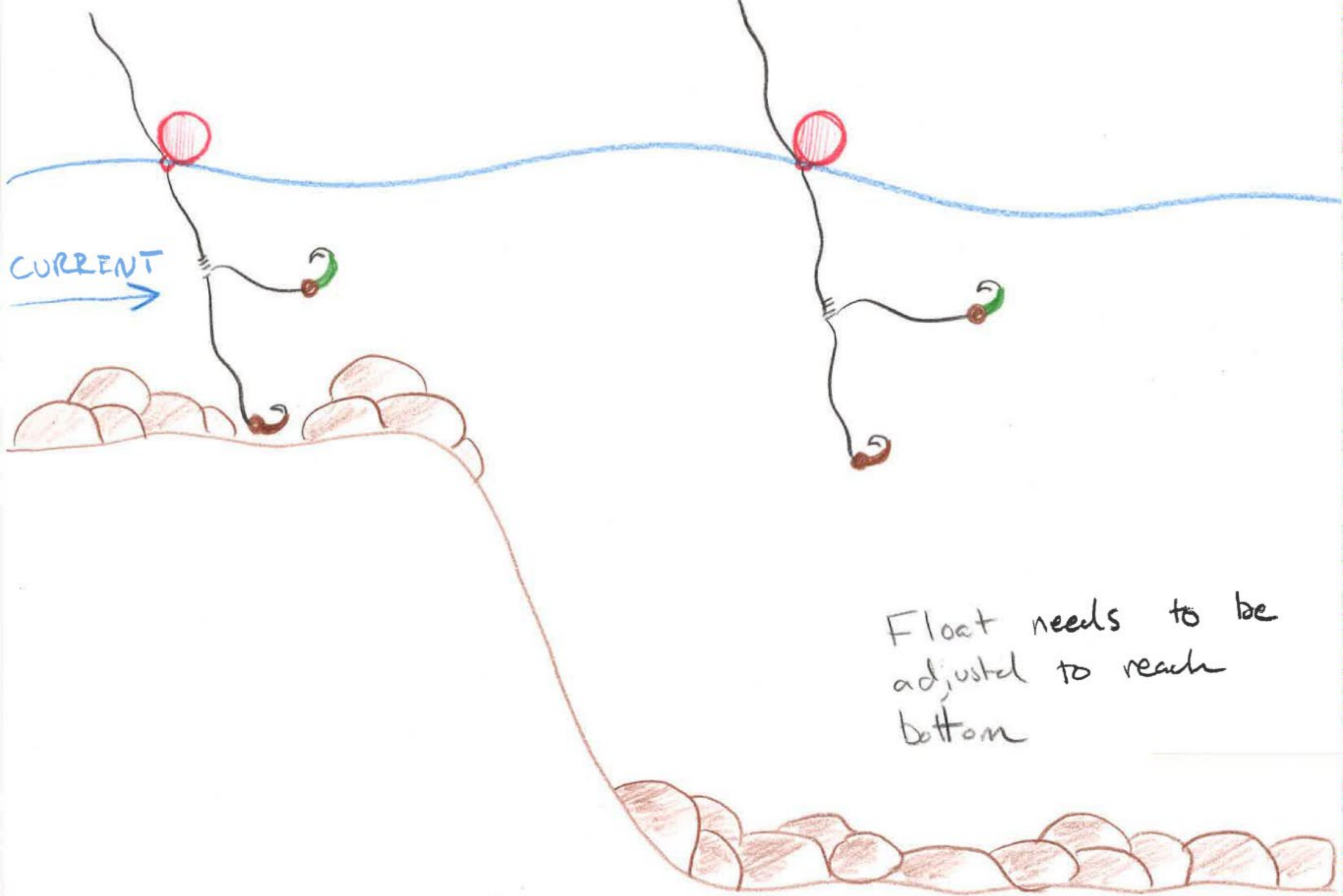


SLOW



Advantages of Euro Style

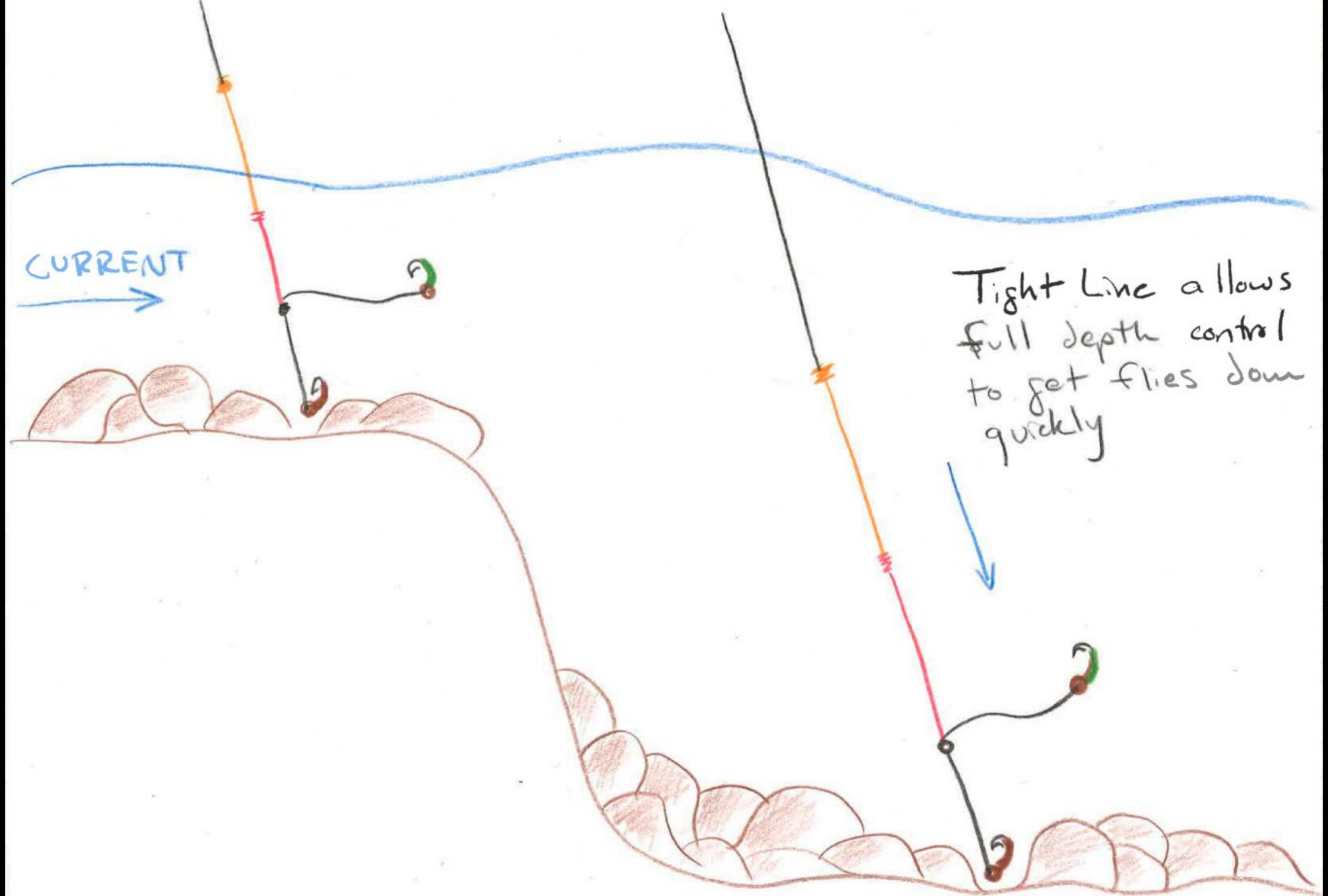
Coverage of varying depths without changing rigging



Float needs to be
adjusted to reach
bottom

CURRENT
→

Tight Line allows
full depth control
to get flies down
quickly



Leader Formula

15'-20'
Maxima 8 or 10 lb.



Blood knot
T/P.



Sighter

~ 24"-36"

(Should be the
Same or lighter
than Maxima)

4x or 5x Flows
~ 24"



Tippet
Ring



5x or 6x
Flows



5x or 6x
Flows









Reading Water

Edges of seams

Deep Pools/ Runs

Riffled sections







Reading Water

Edges of seams

Deep Pools/ Runs

Riffled sections









Reading Water

Edges of seams

Deep Pools/ Runs

Riffled sections











Special Thanks:

Seneca Valley Trout Unlimited

**MD Dept of Natural Resources
and
Cooperative Trout**

**“No Trout were harmed during this
filming”**