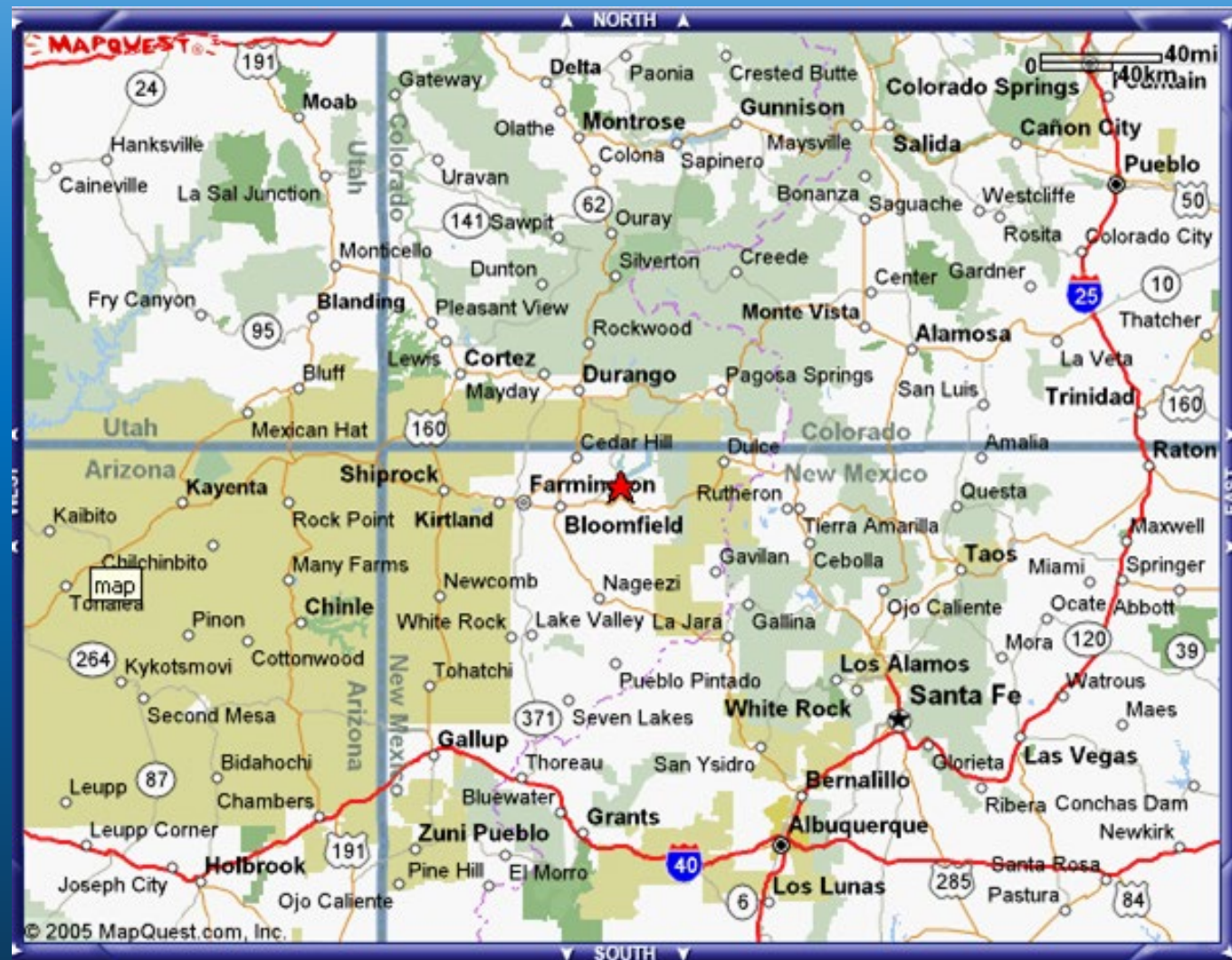




Fishing on the San Juan River in New Mexico

**An Excellent Adventure in October 2019
Noel Gollehon & Doug Hutzell
SVTU Meeting December 2020**

General Location



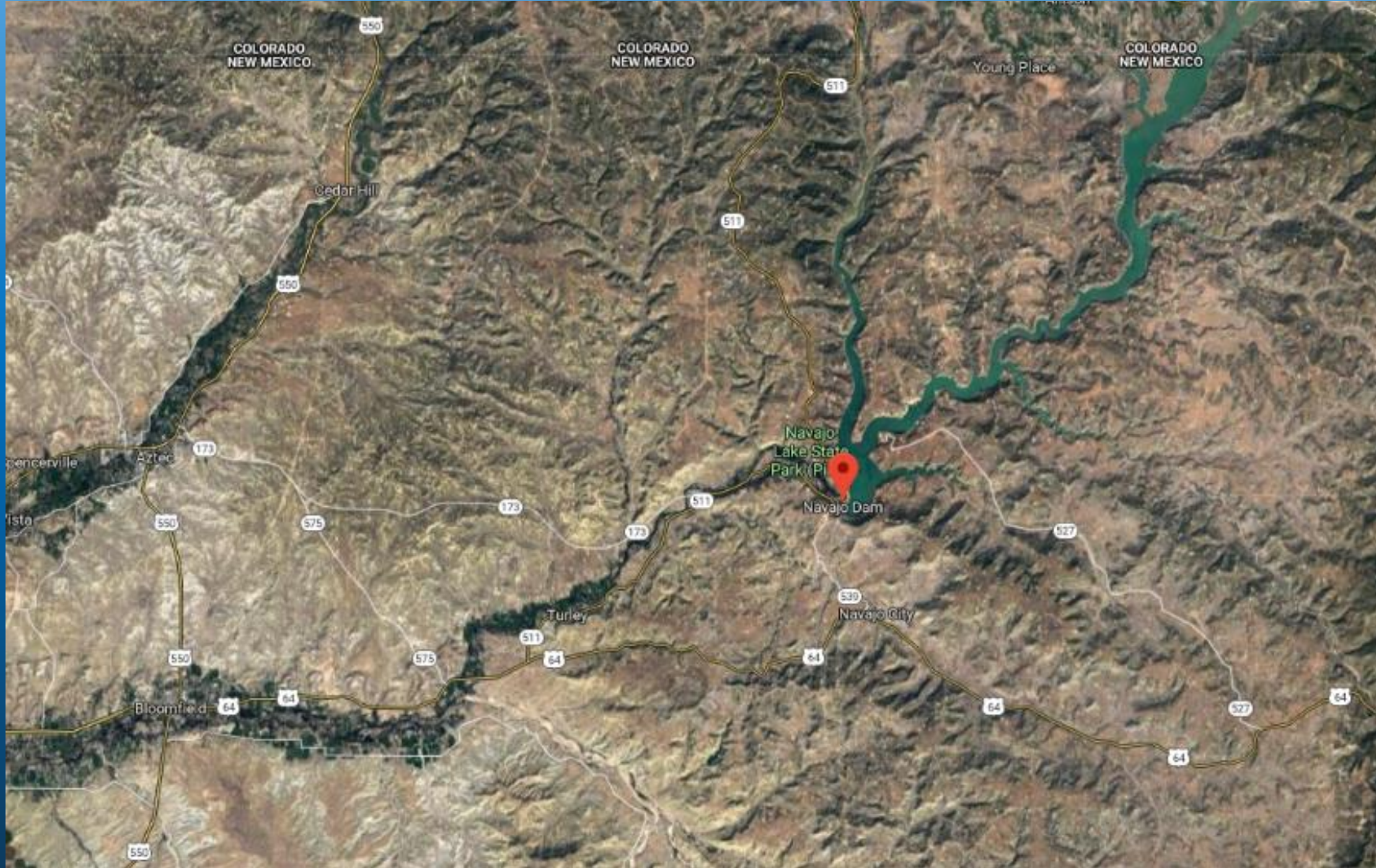
Albuquerque Balloon Fiesta



Blue Skies & Open Spaces



Satellite View of the Area



The Dam and Navajo Lake



From the Dam



A View of the Lake

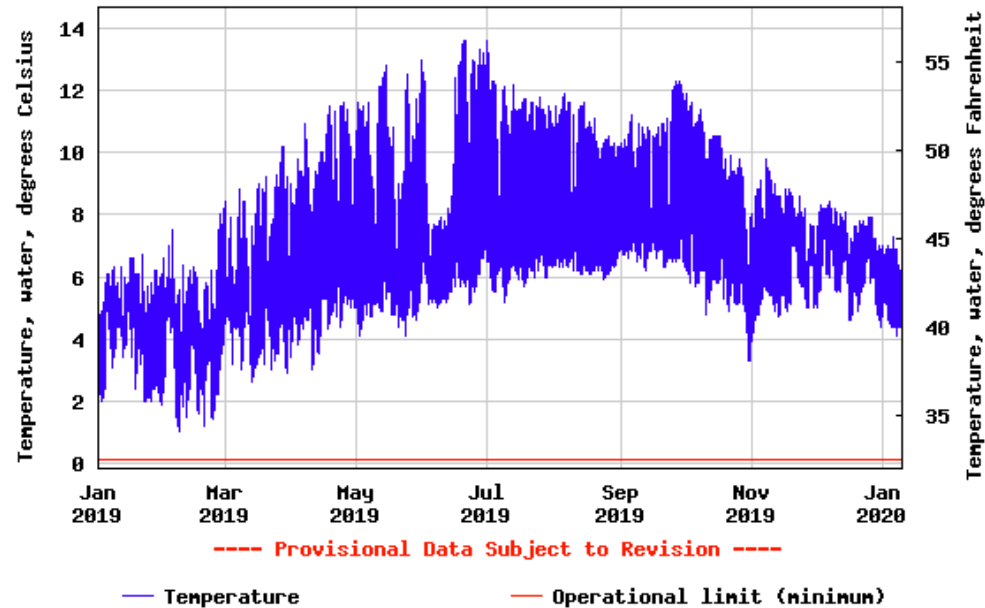


Downstream Gauging Station Data

Temperature, water, degrees Celsius

Most recent instantaneous value: 6.0 01-09-2020 13:15 MST

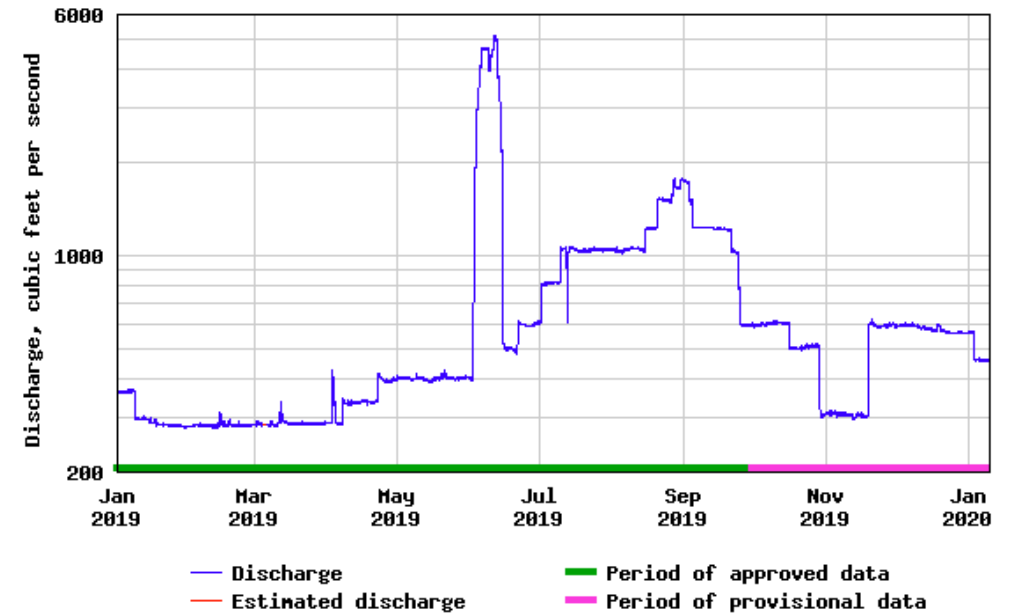
USGS 09355500 SAN JUAN RIVER NEAR ARCHULETA, NM



Discharge, cubic feet per second

Most recent instantaneous value: 457 01-09-2020 13:15 MST

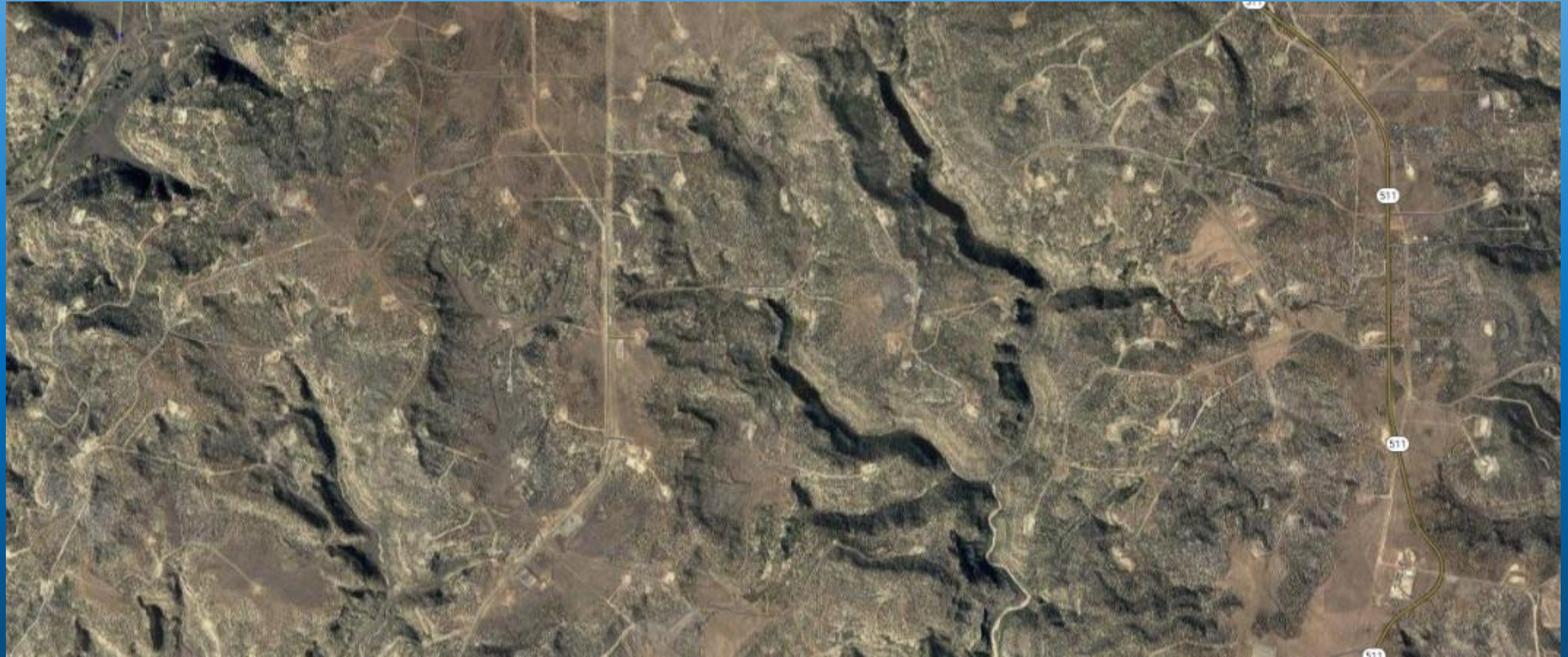
USGS 09355500 SAN JUAN RIVER NEAR ARCHULETA, NM



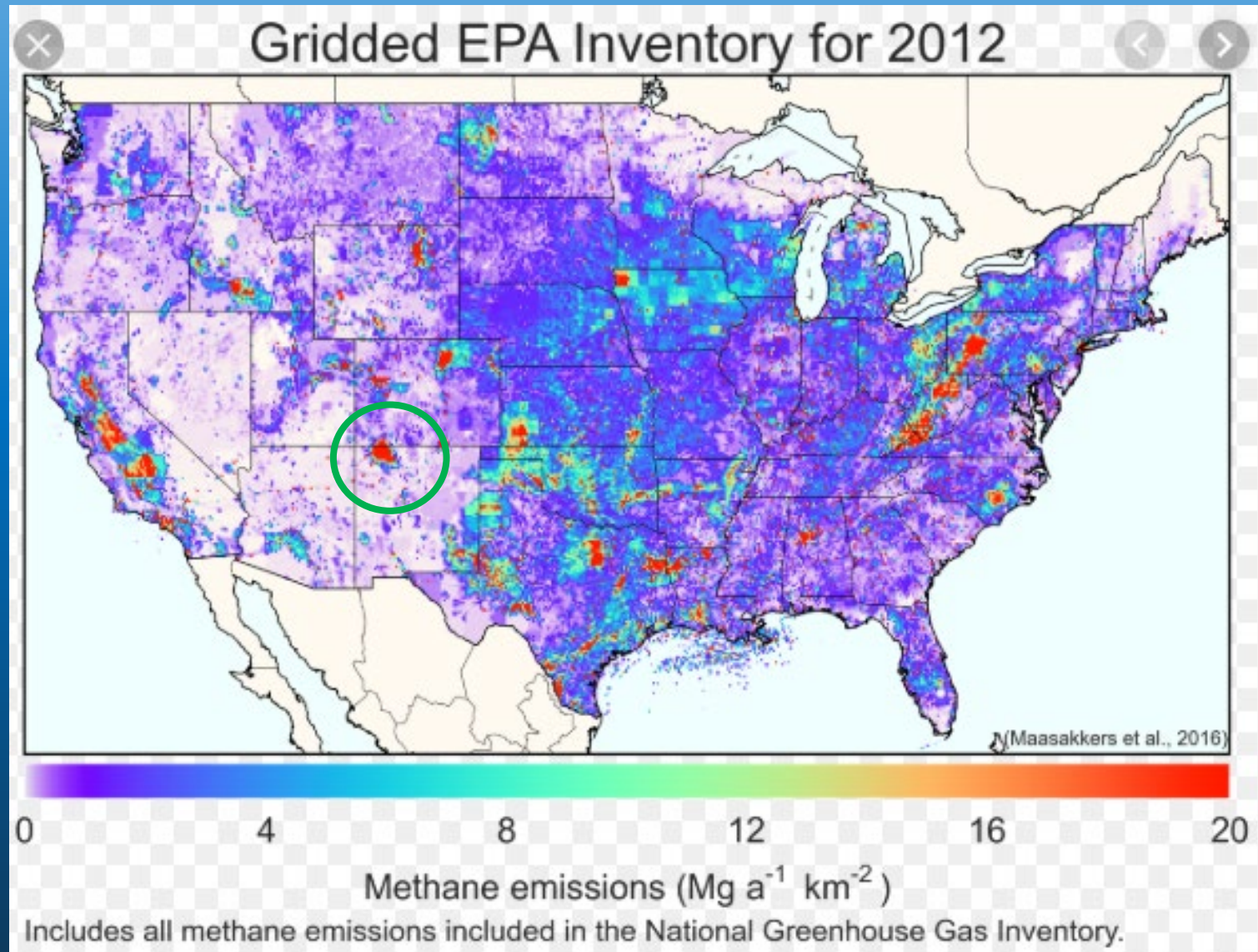
Economic Driver is Not in the Water



It is Energy Driven ...



... With Consequences



Quality Water Regulations



Upper Quality Water: Cable Hole



Overhead View of spillway & Cable Hole



View From the Dam to Upper Flats & Access Point From Road



Walking Into the Flats



View Toward Dam



Wading Toward Main Channel



Doug Landing One



Upper Quality Water: Texas Hole



Overhead View of Texas Hole



Floating With the “Fiberglass Hatch”



Wadeable Downstream of T-Hole



Downstream of T-Hole Doug has a Great Day



This is my First Fish Fly Fishing



Upper Quality Water: Three-Island Run

The map illustrates the San Juan River with various fishing spots and landmarks. Key locations include Caddis Corner, Baetis Bend, Lunger Alley, Middle Main Channel, Lower Flats, Texas Hole, Upper Main Channel, Middle Flats, Upper Flats, Kiddie Pool, Cable Hole, and C & R. The river flows from the top left towards the bottom right, ending at a Dam. A large blue area on the right represents the reservoir behind the dam. A road labeled '511 to CO' runs north-south, and 'Pine River Campground' is located near the top right. Three lots are marked: Lot#3 near Caddis Corner, Lot#2 near Kiddie Pool, and Lot#1 near the Dam. A 'Boat Put In' is also indicated. A legend in the bottom left corner defines road types: Paved Road (grey line), Dirt Road (orange line), and Foot Path (yellow line). A north arrow is positioned at the top center.

San Juan River

Legend

- Paved Road
- Dirt Road
- Foot Path

Flies Reports Hints & Tips Weather

www.ifly4trout.com mike@ifly4trout.com

Copyright 1999, Mike Mora, Ifly4trout Flies and Supplies

A Big Brown on a Dry Fly—WooHoo!



River View at Three-Island Run



Different Strain of Brown?



Upper Quality Water: Lower Flats



Lower Flats Overhead View



Lower Flats



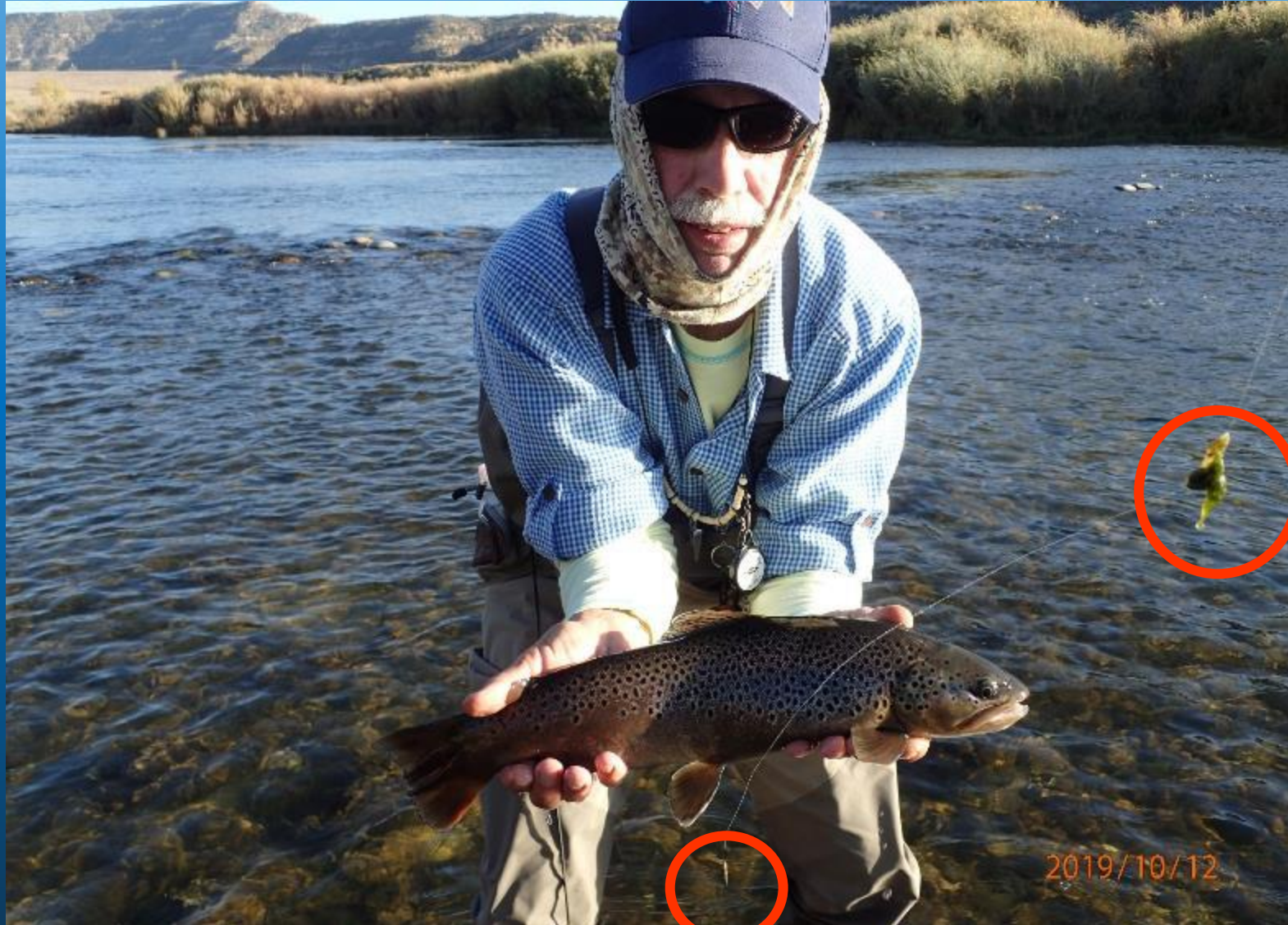
Doug's Lower Flats Rainbow



Doug's Brown



There is a Lot of Gunk in the River



Leaving Upper Quality Water



Final View Upper Quality Water



It Doesn't Get Better



Lower Quality Water: Simón Canyon



Overhead View of Simón Canyon



ET Rock



Upstream to ET Rock



Downstream to the Riffle



Drifting By



Lower Quality Water: Last Chance



Last Chance & Main Boat Take-out



Last Chance Bluffs



Chamisa!

Also known as Rubber Rabbitbrush



Nymphing Last Chance



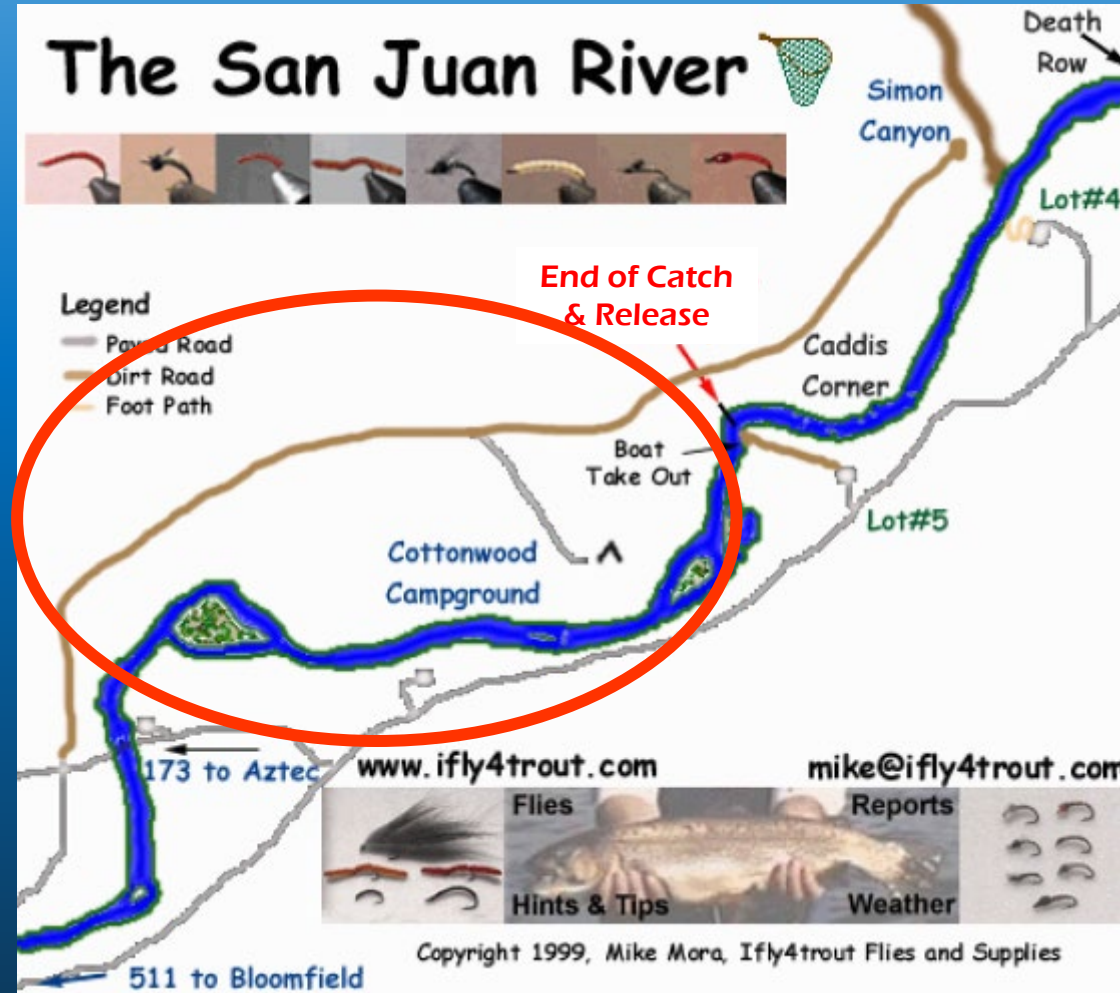
Sisters at Last Chance



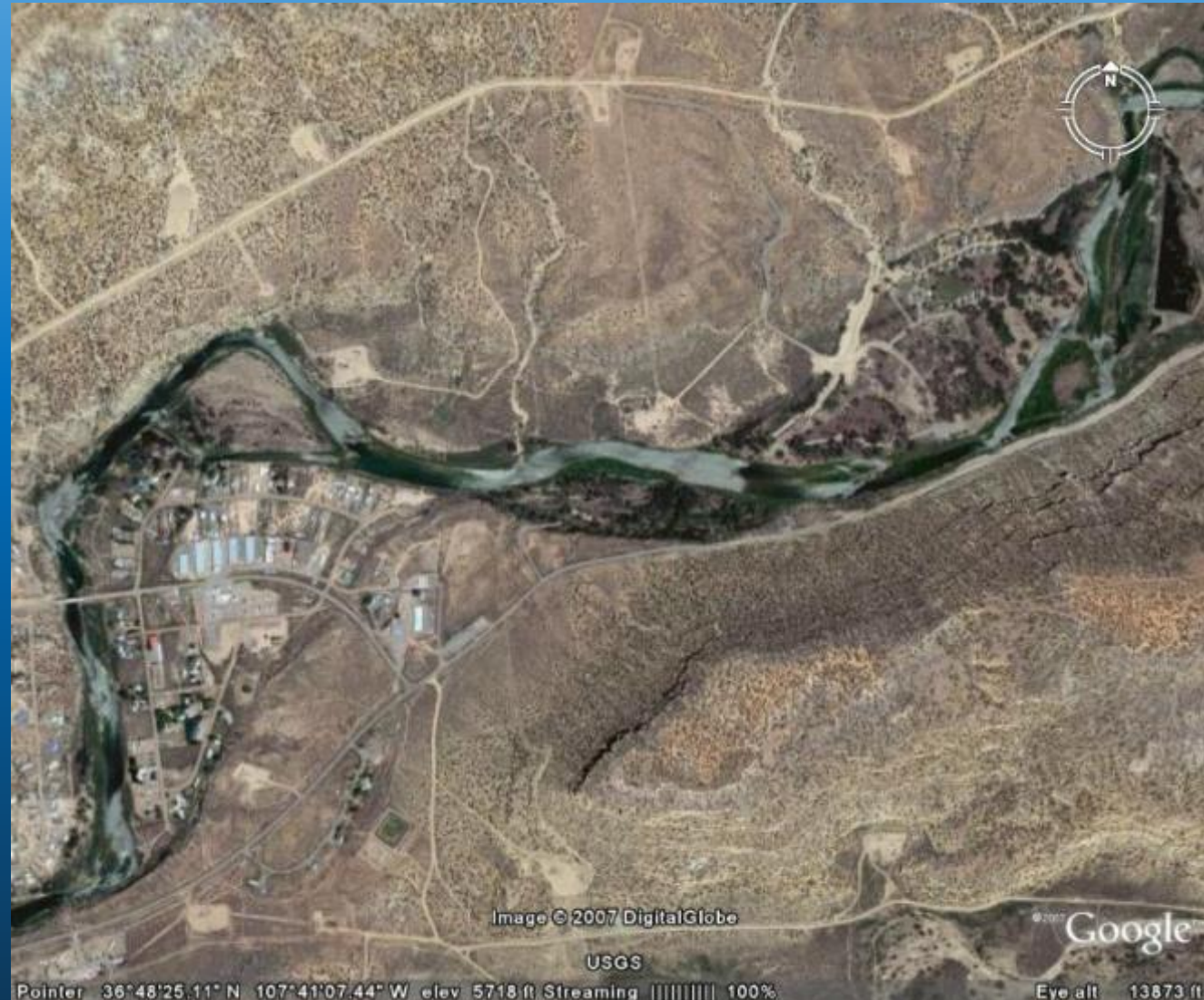
Patagonia Twins



Below the 'Catch & Release' There is Excellent Fishing



Cottonwood Campground Downstream to Bridge



**Everything has Green Chile on it in
New Mexico ... Yum!**



Details

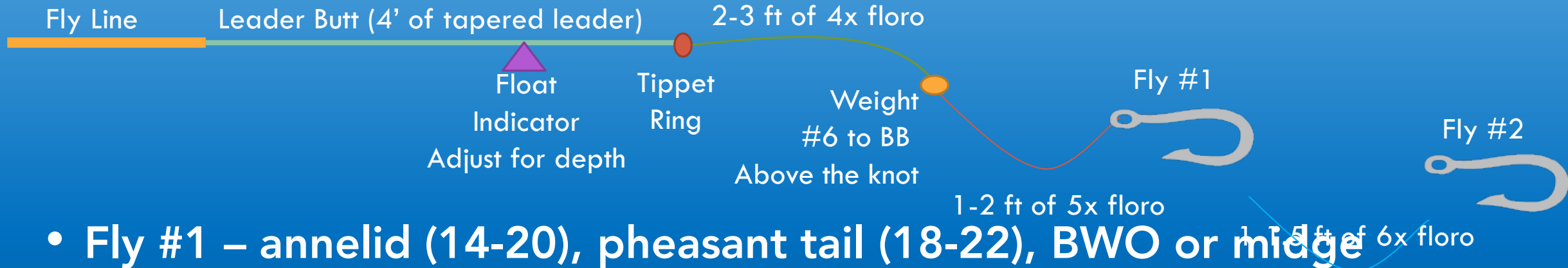
- Gear
 - Western river rod with floating line (4, 5, or 6 wt., around 9 ft)
 - Chest waders (rolled down) or waist-highs (depends on water level & desire)
 - Studded boots
 - Wading staff
 - Excellent insulation layer (cold water!)
 - Sun protection, hats, gloves, buffs
- Cost
 - Airfare \$400-\$600 to ABQ
 - Lodging \$60-\$85 per person per night
 - Guides \$400 per day plus tip

Useful links

- **Fly Shops & Lodging**
 - Float 'n Fish; best shop (<https://www.sanjuanfloatnfish.com/>)
 - Fisheads; has lodging (<https://www.fisheadsofthesanjuan.com/>)
 - Abe's; original with motel, restaurant, small store (<https://www.sanjuanriver.com/>)
 - Soaring Eagle; all inclusive lodge (<https://soaringeaglelodge.net/>)
- **Independent guide**
 - Ryan McRorie; (<http://flyfishingfinatic.com/>)
- **Guide & Flies**
 - San Juan River Flies; flies, guides, leaders, fishing report (<http://www.sanjuanriverflies.com/main.sc>)
- **Stream conditions**
 - USGS San Juan River near Archuleta, NM (https://waterdata.usgs.gov/nm/nwis/uv?site_no=09355500)
 - Navajo Dam information (<https://www.usbr.gov/uc/water/crsp/cs/nvd.html>)
- **Nearby towns**
 - Navajo Dam (village on river, with Float 'n Fish, Abe's & Fisheads, and some lodging)
 - Bloomfield (15 miles, some motel lodging, a few restaurants, fast food places & grocery store)
 - Aztec (15 miles, some motel lodging, a few restaurants, fast food places & a nice Safeway grocery store)

Rigging

- My standard nymph rig for the San Juan

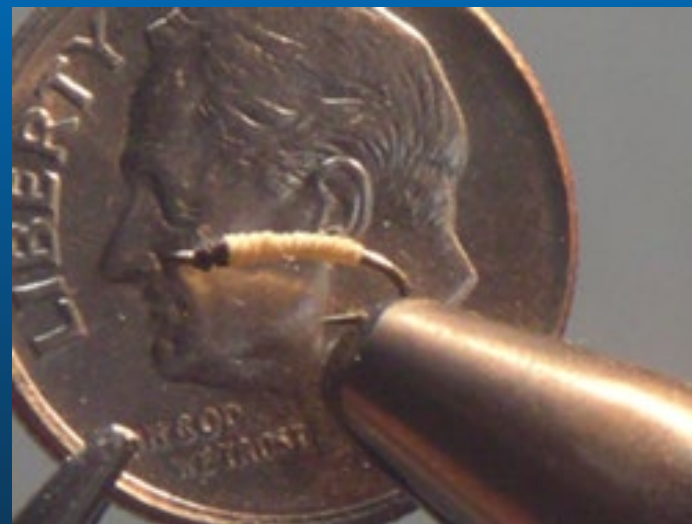
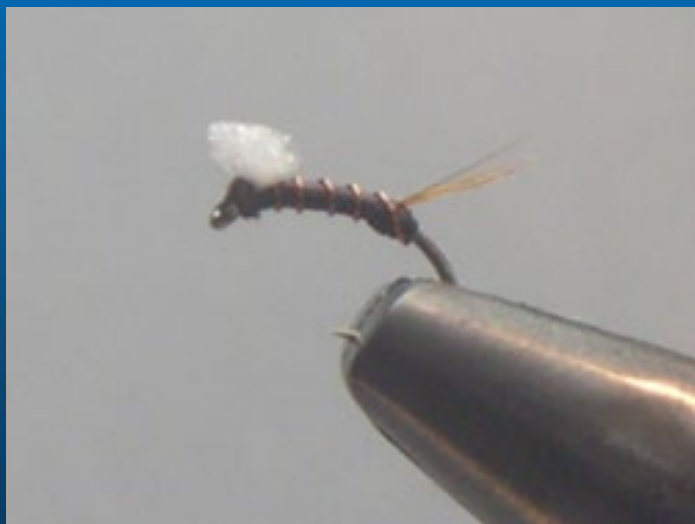


- Fly #1 – annelid (14-20), pheasant tail (18-22), BWO or midge emerger (20-22)
- Fly #2 - BWO or midge emerger (22-24), midge pupa (22-26)
- Shift to dry: replace from tippet ring down with mono tippet (2 ft 4x, followed by 3-4 ft 5x, followed by 2ft 6x to fly)

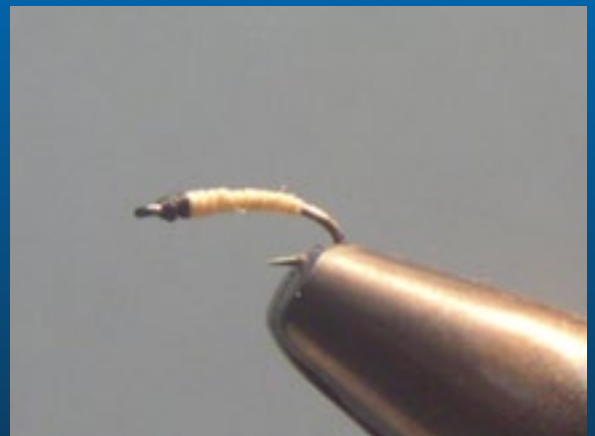
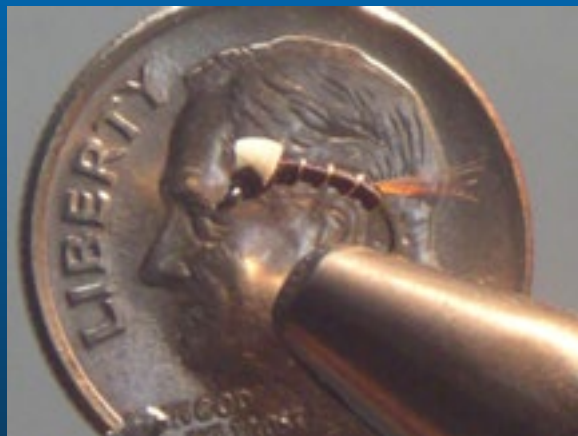
Doug Looking at Tom's Fly Box That Contains ...



Tiny Flies ...



... Like These



... Work the Best



San Juan River Flies

<http://sanjuanriverflies.com>

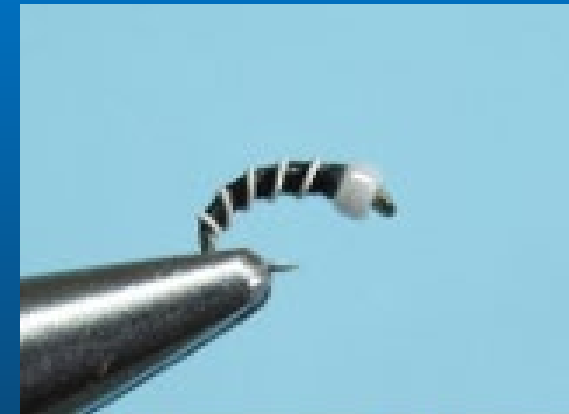
Fly Patterns, rigging & reports



Foam Wing Emerger



Big Mac



Ice Cream Cone Midge

Yes ... Even I Caught Fish



The End

I hope you add the San Juan to your bucket list of destinations.

Thanks for attending this SVTU virtual event.

Noel Gollehon

ngollehon@comcast.net